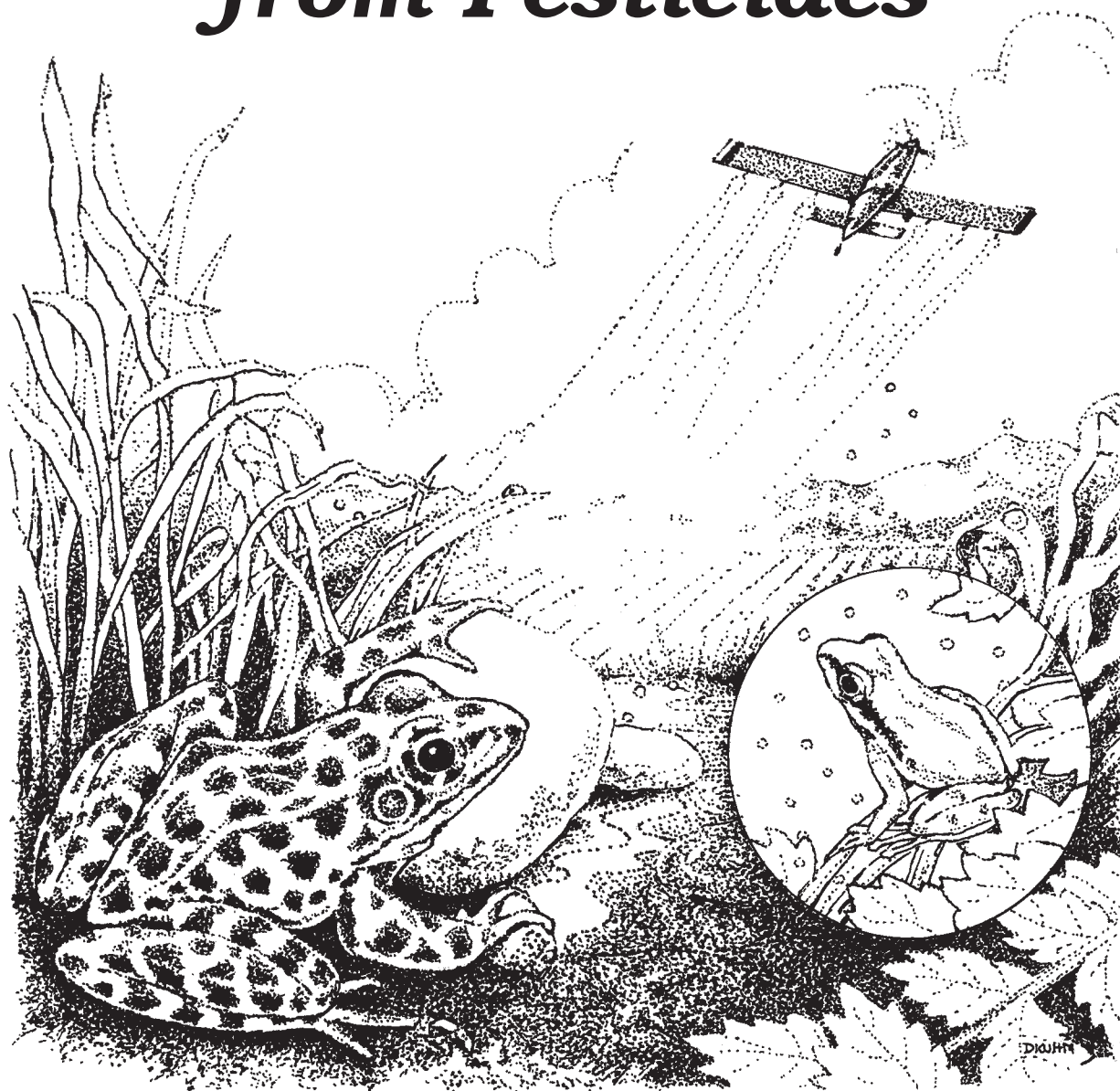


# COMMON SENSE PEST CONTROL QUARTERLY

VOLUME XXIX, NUMBER 1-4, SPECIAL ISSUE (PUBLISHED MARCH 2015)

## *Protecting Amphibians from Pesticides*



# *An Invitation to Join*

## **B · I · R · C**

### **The Bio-Integral Resource Center**

**BIRC, A NON-PROFIT CORPORATION, WAS FORMED IN 1979** to provide practical information on the least-toxic methods for managing pests. The interdisciplinary BIRC staff and an international network of advisors and research associates have designed highly effective alternative solutions to a wide variety of pest problems throughout the world. This work has been based on the principles of 'Integrated Pest Management' or 'IPM'.

**IPM IS A DECISION-MAKING PROCESS** that considers the whole ecosystem in determining the best methods for managing pests. The objective of an IPM Program is to suppress the pest population below the level that causes economic, aesthetic, or medical injury. IPM strategies are designed to be the least disruptive of natural pest controls, human health, and the general environment. Horticultural, physical, mechanical, biological, least-toxic chemical, and educational tactics are integrated to solve pest problems with a minimal reliance on pesticides.

**THE IPM APPROACH HAS GAINED FAVOR** with government and business because it is cost-effective. Community groups and pest management professionals are enthusiastic about IPM programs because the use of toxic materials is reduced while better pest control is achieved.

**BECOME A MEMBER OF BIRC!** Membership in the Bio-Integral Resource Center supports our ongoing research program devoted to evaluating and disseminating alternative strategies for the many pest problems still being treated exclusively with pesticides. Membership support also enables BIRC's technical staff to continue to provide information and assistance to individuals and organizations endeavoring to change pest control policy and practices in their communities and places of work.

**BIRC MEMBERS RECEIVE ONE OR BOTH OF OUR JOURNALS**, the *Common Sense Pest Control Quarterly* and *The IPM Practitioner*. Members are entitled to consultations by phone or correspondence on an individual pest problem each membership year. Just write a description of the problem and send it to BIRC. Our technical staff will research the problem and provide you, if possible, with least-toxic solutions. BIRC memberships are tax-deductible to the extent allowed by law.

**MEMBERSHIPS.** Individuals can join BIRC for \$30/yr and receive *Common Sense Pest Control Quarterly*, or they can pay \$35/yr to receive the *IPM Practitioner*. Dual Members pay \$55/yr and receive both journals. Institutional rates are \$50/yr for the *Quarterly*, \$60/yr for the *Practitioner* and \$85/yr for both journals. Sustaining Members pay the Dual Membership fee and may also choose to donate to sustain BIRC activities. FEI# 94-2554036

**FOREIGN POSTAGE.** Professional and Associate Members from Canada and Mexico, add \$15 for the *Practitioner* and \$5 for the *Quarterly*; Dual Members, add \$20 to cover postage for both journals. Professional and Associate Members from other countries, add \$25 airmail for the *Practitioner*, \$10 airmail for the *Quarterly*; Dual Members, add \$35 to cover airmail postage for both journals.

## ***Got A Pest Management Question?***

If you have a specific pest management question, first check our website, [www.birc.org](http://www.birc.org). Often you will find a publication that covers your problem. If you do not find the solution on our website, you can write us with a description of the pest and the problem. Include scientific names of the pest. You can also email this information to [birc@igc.org](mailto:birc@igc.org). We will respond as quickly as possible.

*Common Sense Pest Control Quarterly* is published four times per year by the Bio-Integral Resource Center (BIRC), PO Box 7414, Berkeley, CA 94707, 510/524-2567.

The material here is protected by copyright, and may not be reproduced in any form without permission from BIRC. Contact William Quarles at 510/524-2567 for proper publication credits and acknowledgement.

**Managing Editor:** William Quarles.

**Contributing Editors:** Tanya Drlik, William Quarles, Laurie Swiadon.

**Artist:** Diane Kuhn. **Business Manager:** Jennifer Bates. **Advertising:** William Quarles.

© 2015 Bio-Integral Resource Center. All rights reserved. ISSN 8756-7881



# Pesticides and Amphibian Decline



By William Quarles

Since 1970, there has been a widespread worldwide decline of amphibians. The decline has accelerated over the last 20 years. About 32% of species are threatened, 43% are seeing population declines, and many have gone extinct (Stuart et al. 2004). Probable causes include habitat destruction, global warming, disease, pollution, and pesticides. Interactions among causes such as global warming, disease, and pesticide contamination are likely (Hayes et al. 2010; Collins and Crump 2009). This article concentrates on the effects of pesticides. The second article in this publication describes pesticide alternatives that protect amphibians.

## Scale of Use

In the U.S. about 1.1 billion lbs (500 million kg) of pesticide active ingredients were used in 2007. This is about 20% of the amount used in the whole world. About 80% is used in agriculture, the rest includes 9% home and garden, and 11% industrial, government, and miscellaneous. About 47% of the total is herbicides, 8% insecticides, and 6% fungicides. The latter figure does not include 181 million lbs (82.3 million kg) of sulfur and oil used as fungicides. Urban use is significant, as pesticides are used in 78 million households (EPA 2011).

Use of herbicides such as glyphosate has exploded with plantings of GMO Roundup Ready corn and soybeans. Application of glyphosate surged from 25 million lbs (11.4 million kg) in 1996 to 180 million lbs (81.8

million kg) in 2007 due to plantings of GMOs. A relatively new problem is associated with GMO soybeans. Roundup Ready soybeans are susceptible to diseases such as soybean rust caused by *Phakopsora pachyrhizi*. Fungicide applications in soybeans, corn, and wheat have increased from 2% to 25% of planted acreage since 2005 (Belden et al. 2010).

Much of the U.S. pesticide use is in California. About 603 million lbs (274 million kg) of pesticide active ingredients were sold in California in 2012, including about 22 million lbs (10 million kg) of glyphosate, and at least 45 million lbs (20.5 million kg) of fungicides, including chlorthalonil, pyraclostrobin, mancozeb, and sulfur. Insecticides included about 2 million lbs (0.9 million kg) of chlorpyrifos and malathion, and more than a million pounds of pyrethroids, mostly bifenthrin and permethrin (DPR 2012).

Pesticides are applied in vast quantities both in agriculture and in urban areas. Amphibians are exposed through direct overspray, pesticide drift, rainfall, and runoff into water bodies. They are exposed to pesticides at all life stages, in the water and on land. Both exposure pathways can lead to population reductions (Todd et al. 2011).

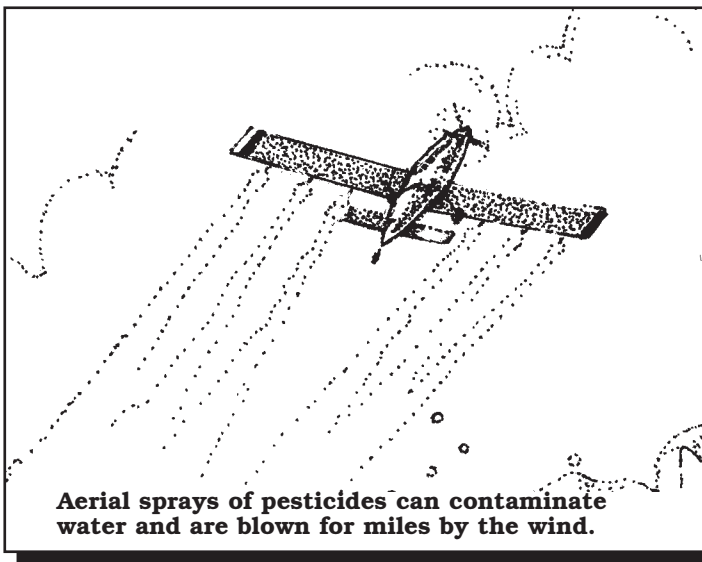
## Pesticides are Killing Amphibians

Amphibians are sensitive to most classes of pesticides including insecticides, fungicides, and herbicides. Acute and chronic toxicity kills them outright. Direct oversprays of many pesticides cause 100% mortality. Sublethal effects such as delayed metamorphosis, increased predation, reduced size, reproductive problems, deformities, and depressed immune systems can also lead to destruction (Mann et al. 2009; Wagner et al. 2013; Christin et al. 2013; Hayes et al. 2010).

Exposures tend to be seasonal and surge with each application (Mann et al. 2009). Toxic concentrations of active ingredients are often found in the environment (See Table 1). Formulations can be 400x more toxic than the active ingredient. Pesticide mixtures found in the real world can have additive toxic effects (Relyea 2004; 2009; Hayes et al. 2006).

Sublethal effects are very important. Atrazine at water concentrations of 0.1 parts-per-billion (ppb) is an endocrine disruptor. Concentrations of 100 ppb and more are often found in the environment. Atrazine and other endocrine disruptors interfere with reproduction and can reduce amphibian populations (Hayes et al. 2002; 2003).

Atrazine (21 ppb) and other pesticides can depress amphibian immune systems. For example, Christin et



Drawing by Diane Kuhn

al. (2003; 2004) found that environmentally relevant mixtures of atrazine, metribuzine, endosulfan, lindane, aldicarb, and dieldrin were able to depress the immune systems of juvenile leopard frogs, *R. pipiens*; and African clawed frogs, *Xenopus laevis*. In a laboratory study sublethal doses of DDT (990 ng/g), malathion (990 ng/g) and dieldrin (50 ng/g) were able to depress the immune system of *R. pipiens*. These concentrations have been found in wild frogs (Gilbertson et al. 2003). When *R. pipiens* was fed DDT and dieldrin, tissue concentrations of 2.1 ppb dieldrin and 75 ppb DDT caused immune depression (Albert et al. 2007).

### Weak Immune Systems

Weakened immune systems make amphibians more susceptible to ranavirus, trematodes, and possibly chytrid fungus (Christin et al. 2013; Rohr et al. 2008a). Chytrid fungus, *Batrachochytrium dendrobatidis* (Bd), is an especially important factor in amphibian decline (Collins and Crump 2009).

Toxicity depends on the species. We are losing species such as the mountain yellow legged frog, *Rana muscosa*, that is susceptible to pesticides and disease, and are retaining hardier species, such as the Pacific chorus frog, *Pseudacris regilla*. But even hardy species thought to be stable are showing signs of decline. Since 2002, surveys of ponds and other habitats in the U.S. show an average occupancy decrease of about 4% a year (Sparling and Fellers 2009; Adams et al. 2013).

Pesticides also interfere with the normal balance of community ecology. Zooplankton, phytoplankton, predators, and the amphibian food supply can be disturbed. Effects are complex and not well understood (Boone and Semlitsch 2002; Relyea and Hoverman 2008). Pesticides may also be changing the microbial distribution in amphibian habitats and accelerating the evolution of virulent pathogens (Harris et al. 2009; Fisher et al. 2012; McMahon et al. 2012).

Amphibians can be found nearly everywhere. They live in forests, swamps, ditches, meadowlands, suburbia, cities, and agricultural lands (Smyth 1962).

Pesticides also can be found nearly everywhere, and amphibian exposures can be considerable. Even pristine areas are contaminated (Smalling et al. 2013; Gilliom et al. 2007).

Their highly permeable skin makes dermal absorption of pesticides likely at every exposure. Up to 83% of an applied pesticide can be absorbed through dorsal or ventral skin. Up to 46% can be absorbed through the legs (Bruhl et al. 2011). Glyphosate absorption is 26 times faster in amphibians than mammals (Wagner et al. 2013). Frogs shed their skin about every two weeks and eat it for nutrition. Any pesticide residues left on the skin are probably absorbed (Smyth 1962).

Pesticides are killing amphibians in the water where they breed and develop, in terrestrial areas where adults live, and during overland migrations to aquatic areas (Bruhl et al. 2013).

### Exposure to Pesticides in Water

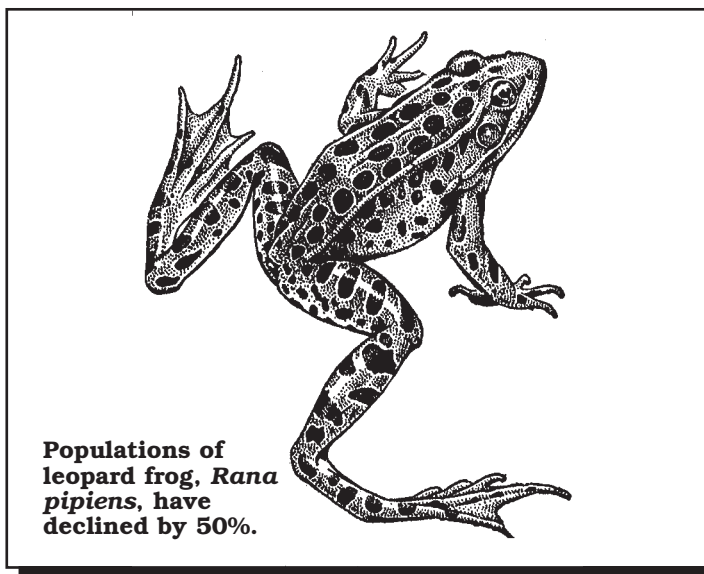
Many freshwater sources are near agricultural lands, and the water is contaminated. The United States Geologic Survey (USGS) has found that 97% of streams in urban and agricultural areas, and 65% of streams in pristine areas are contaminated with pesticides. About 83% of urban streams and 57% of agricultural streams are contaminated with enough pesticide to be hazardous to aquatic life. Up to 10% of these streams are hazardous to human health (Gilliom 2007; Gilliom et al. 2007; USGS 2014ab).

Many frogs lay their eggs in water and develop as tadpoles (see Box A). So eggs and tadpoles can be exposed to pesticides dissolved in water. Also, sediment concentrations of pesticides are at least 1000x greater than water concentrations (Smalling et al. 2013). Tadpoles can be exposed while feeding in contaminated sediments, and adults of species that hibernate in sediments are at increased risk of toxic effects (Smyth 1962; Smalling et al. 2015).

### Exposure to Pesticides on Land

Adult and juveniles are exposed on land through aerial sprays for mosquitoes, forestry and agricultural pests, drift, and dermal absorption from soil and plants. Because the EPA does not require amphibian toxicity tests for pesticide registration, there are large data gaps. These data gaps are being closed by independent scientists. One experiment tested label spray rates of 7 pesticides on adults of the common frog species, *Rana temporaria*. Mortality ranged from 40-100%. Perhaps most surprising was the lethal effects of fungicides. Two fungicides caused 100% mortality within one hour, others showed 40-60% mortality. Three products caused 40% mortality after 7 days after 10% label rate exposure (Bruhl et al. 2013). Direct overspraying of terrestrial life stages of several frog species with Roundup at label rates resulted in an average 79% mortality (Relyea 2005a).

Van Meter et al. (2014) tested pesticide absorption from soil with 5 pesticides and 7 adult frog species. Atrazine showed highest absorption and bioaccumulation, although skins were generally more permeable to



**Table 1. Environmentally Relevant and Toxic Water Concentrations**

Pesticide	Environmentally Relevant Concentration*	Toxic Water Concentrations	Species**	Reference
Chlorpyrifos	0.3 ppb to 4 ppb	0.8 ppb lethal effects	<i>R. boylii</i>	Giesy and Solomon 2014; Sparling and Fellers 2009
Chlorpyrifos	161,000 ppb	in sediments	-----	Sparling and Fellers 2009
Cypermethrin	0.6 ppb	1 ppb adverse effects, 10 ppb 100% mortality	<i>R. arvalis</i>	Greulich and Pflugmacher 2003
Endosulfan	10 ppb to 1700 ppb	10 ppb lethal effects	<i>R. dalmatina</i>	Lavorato et al. 2013; Smalling et al. 2013
Endosulfan	48,700 ppb	in sediments	-----	Sparling and Fellers 2009
Propiconazole	74 ppb	74 ppb Stratego***, 40% mortality	<i>B. cognatus</i>	Hooser et al. 2012; Belden et al. 2010
Atrazine	100 ppb	0.1 ppb endocrine	<i>R. pipiens</i>	Hayes et al. 2003; Rohr and McCoy 2010
Atrazine	100 ppb	21 ppb immune depression	<i>R. pipiens juveniles</i>	Bishop et al. 2010, Christin et al. 2004
Pyraclostrobin	150 ppb	15 ppb Headline*** 100% mortality	<i>B. cognatus</i>	Hooser et al. 2012; Belden et al. 2010
Chlorthalonil	164 ppb	0.164 ppb 86% mortality	<i>R. sphenoccephala</i>	McMahon et al. 2012; 2011
Imidacloprid	240 ppb	50 ppb, genetic damage	<i>R. nigromaculata</i>	Bonmatin et al. 2015; Gibbons et al. 2015
Imidacloprid	240 ppb	9000 ppb lethal	<i>Acris crepitans</i>	Bonmatin; Ade et al. 2010
Glyphosate	2,000 ppb	570 ppb Roundup Weather Max*** 80% lethal	<i>H. versicolor</i>	Wagner et al. 2013
Glyphosate	19,000 ppb	in sediments	-----	Howe et al. 2004

\*Refers to concentration in surface water unless otherwise specified.

\*\*Refers to tadpoles unless otherwise specified.

\*\*\*Refers to concentration of formulation.

fipronil. Water solubility and soil partition coefficients were good predictors of dermal absorption. Maximum label rates were applied to soil, and resulting tissue concentrations ranged from 0.019 to 14.6 µg/g (ppm) over an 8 hour period. Immune suppression can occur at tissue concentrations 300-7300 times lower (Gilbertson et al. 2003; Albert et al. 2007).

### Fragmentation of Habitat

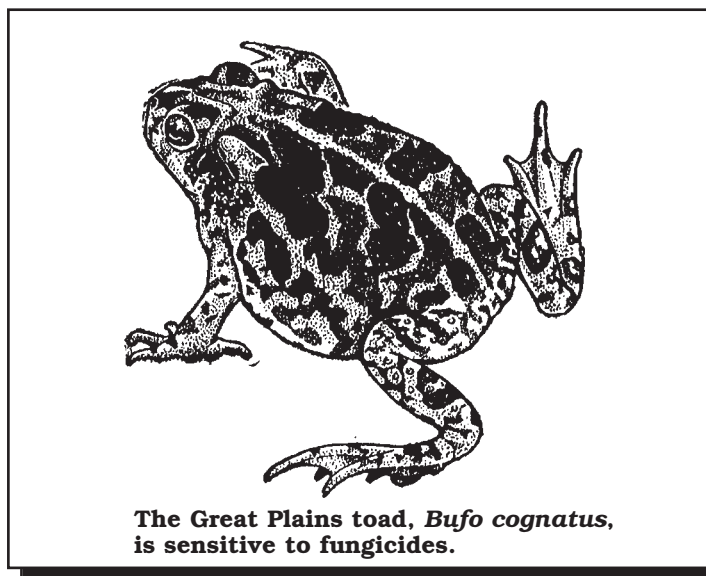
Amphibians dwelling in terrestrial areas often migrate across agricultural lands toward breeding areas in water and can be exposed dermally to direct pesticide oversprays and by contact with contaminated plants and soil. This “habitat split” between aquatic breeding areas and terrestrial habitat can reduce amphibian species diversity. It can explain why most of amphibian declines are associated with species with aquatic larvae (Rubbo and Kiesecker 2005; Todd et al. 2011; Becker et al. 2007).

### Environmentally Relevant Concentrations

Pesticide concentrations detected frequently in the environment are called environmentally relevant amounts. Most often, water concentrations are measured. This article estimates effects on amphibians in the wild by comparing toxic water concentrations found in the laboratory with environmentally relevant amounts found in surface water. This is a very conservative approach. By the time a water measurement is

made in the environment, pesticide levels may have dropped, dispersing into amphibian tissues and into sediments. Field studies show that tissue and sediment concentrations can be 2500 to 5000 times higher than water concentrations (Smalling et al. 2013; Smalling et al. 2015).

Most laboratory studies do not measure tissue concentrations. Water concentrations are measured over time periods of 24 to 96 hours. As we see in Table 1, environmentally relevant water concentrations often exceed toxic concentrations found in the laboratory, so amphibians are often exposed to toxic amounts.



**The Great Plains toad, *Bufo cognatus*, is sensitive to fungicides.**

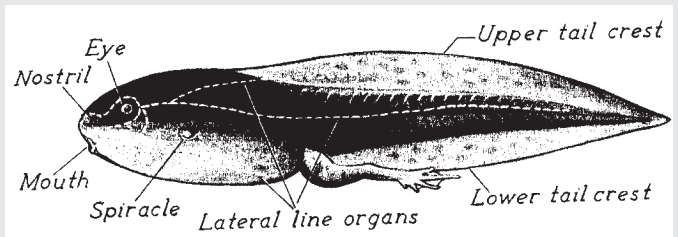
Drawing from Stebbins 1954

## Box A. Amphibian Biology

Amphibians include frogs, toads, newts, salamanders, and caecilians. They have been on earth for 350 million years. Amphibians are marked by diversity. Caecilians are wormlike creatures with no legs, salamanders have tails and legs, frogs have legs and generally no tails. There is a great diversity of size. Adult frogs can vary from the 7.7 mm (1/4 in) *Paedophryne amauensis*, to goliath frogs, *Conraua goliath*, more than 35 cm (14.2 in) inches long weighing 3 kg (6.6 lbs) (Attenborough 2008; Smyth 1962).

The Amphibia Class includes the Orders Caudata (salamanders), Salientia (frogs and toads), and Gymnophiona (caecilians). The Salientia Order includes families of tree frogs (Hylidae), aquatic frogs (Ranidae), and toads (Bufonidae). So a toad is one kind of frog. Generally toads have short snouts, dry warty skins and short hind legs good for walking. Skins often contain bioactive chemicals including poisons. Most frogs shed their skins and eat them about every two weeks. Frogs of Ranidae and Hylidae have bulging eyes, moist skin, and large back legs for hopping. Habitat determines frog morphology. Aquatic frogs have webbed feet, tree frogs have round toe pads that help with climbing (Stebbins 1954).

Amphibians live just about everywhere. Forests, meadows, ditches, swamps, and your backyard. Most frogs lay and fertilize their eggs in water. Eggs protected by jelly can be found on top of the water, down in sediment, on aquatic plants, or deposited in shallows near the water's edge. Eggs hatch into mostly herbivorous tad-



Drawing from Smyth 1962

**Eggs hatch into aquatic tadpoles that change into adult frogs.**

poles that undergo metamorphosis to the adult forms. Metamorphosis can be in days or the tadpole stage can last for years. Adult frogs are carnivorous, and their major food supply is insects, especially mosquitoes.

Frogs fertilize eggs as they are laid. Salamanders carry fertilized eggs in their bodies, which they then lay in water, usually moving water. They are generally silent and hard to find. Frogs are vocal, especially during mating season. Some frogs are reproductively prolific laying 5,000 to 30,000 eggs, others may lay as few as 5 eggs.

Unlike birds and mammals, amphibians cannot regulate their body temperature. Their bodies equilibrate to ambient temperatures. Adult frogs breathe through their lungs, but can also absorb oxygen through their skin, making it possible to spend long times underwater. In cold weather, they hibernate, burrowing into soil or sediment to escape the effects of cold (Smyth 1962; Attenborough 2008).

Pesticide effects in the environment are complex, and interacting factors such as temperature and biological factors may make environmental concentrations either more or less toxic. To compensate for these factors, pesticides are often studied in mesocosms. Mesocosms are large tanks supplied with tadpoles, zooplankton, phytoplankton, leaves, aquatic plants, and predators. They are meant to simulate environmental exposures (Relyea 2005c).

Looking at pesticides one at a time is also a conservative approach. Mixtures of pesticides are often found in the environment, and these can have at least additive toxic effects (Relyea 2004; 2009; Hayes et al. 2006). [Note: Concentrations in this article are often given in micrograms ( $\mu\text{g}$ )/liter or nanograms (ng)/gram. A microgram is one-millionth of a gram, a nanogram is one-billionth of a gram. So, 1  $\mu\text{g}$ /liter and 1 ng/gram both equal 1 part-per-billion (ppb).]

### Insecticides Deadly

Low water concentrations (1 ppb) of insecticides can be directly lethal to amphibians (Sparling and Fellers 2009). Amphibian decline was first noticed about 20 years after DDT was introduced. DDT and other organochlorine insecticides were the first pesticides to be used extensively after World War II. DDT use started during the war, but the golden age was during the 1950s and 1960s. DDT was banned in 1972 because of

its persistence, bioaccumulation, and toxic effects on wildlife (NPIC 2000). Hordes of amphibians were killed when DDT was applied as an aerial spray for forest insects or mosquitoes (Goodrum et al. 1949). Other organochlorines such as dieldrin, endosulfan, and chlordane are more acutely toxic to amphibians than DDT (Jones et al 2009).

Though most organochlorines have been banned, endosulfan is still in use. Environmentally relevant concentrations of endosulfan can kill amphibians (Sparling and Fellers 2009). Concentrations of 10  $\mu\text{g}$  to 1.7 mg/liter (10-1700 ppb) are often found in surface waters (Lavorato et al. 2013). Concentrations of 10  $\mu\text{g}$ /liter (10 ppb) cause high mortality, decreased growth, and malformations in *R. dalmatina* tadpoles (Smalling et al. 2013). There is a lag effect after exposure. Leopard frogs, *Rana pipiens*, showed no mortality after 4 days, but 97% mortality after 8 days when exposed to 60  $\mu\text{g}$ /liter (60 ppb) (Jones et al. 2009). Residues of organochlorines are found in amphibian tissues, even in pristine locations (Smalling et al. 2013). See Box B for more on insecticides.

### Herbicides Lethal

Herbicides such as atrazine and glyphosate can kill amphibians. Atrazine is banned in Europe, but 74-78 million lbs (33.6 to 35.5 million kg) of atrazine were used in 2007 in the U.S. (EPA 2011). Atrazine is not

## Box B. Other Insecticides

Organophosphates (OPs) replaced organochlorines and were predominantly used in the 1970s through the 1990s (EPA 2011). Chlorpyrifos, malathion and other OPs are still used in agriculture. Some frog species are more sensitive than others. The chlorpyrifos LC50 of a declining species such as *R. boylei* is 66.5 µg/liter (66.5 ppb). Lethal effects are seen at 0.8 µg/liter (0.8 ppb). Species not declining, such as *P. regilla* are more resistant (365 µg/liter) (Sparling and Fellers 2009). Some of these toxicities were measured over a period of 30 days. For OPs, the longer the exposure, the greater the toxicity. The OPs kill by inhibiting the neuroenzyme acetylcholinesterase, and oxidation products of the OPs are 10 to 100 times more toxic to the enzyme (Sparling and Fellers 2007).

Environmentally relevant amounts of chlorpyrifos vary greatly. In areas near agriculture, water concentrations of 0.01 to 0.3 µg/liter (ppb) are often seen. In surface water, maximum concentrations are 0.33 to 3.96 µg/liter (ppb). Undoubtedly, amphibians are subjected to larger transient pulses (Schuyttema and Nebeker 1996; Giesy and Solomon 2014). Chlorpyrifos concentrates in tissues and sediments. Concentrations of 161,000 ppb have been found in sediments of California mountain lakes (Sparling and Fellers 2009).

### Pyrethroids

Natural pyrethrins have been used for more than 100 years. Allethrin, the first synthetic pyrethroid to be developed, was introduced in 1949. Other successful first generation products, such as resmethrin, were sold in the 1960s. But permethrin, the first synthetic pyrethroid to see extensive use in agriculture, was commercialized in 1979 (Zalom et al. 2005; NPIC 2009). Use of synthetic pyrethroids accelerated during the 1980s. They are currently major use insecticides in structural pest control, landscapes and agriculture. Pyrethroids used as perimeter sprays in structural pest control contaminate water. Runoff eventually ends up in sediments, causing toxicity to water creatures such as *Hyaella azteca*. Most problematic in California is bifenthrin (Quarles 2012).

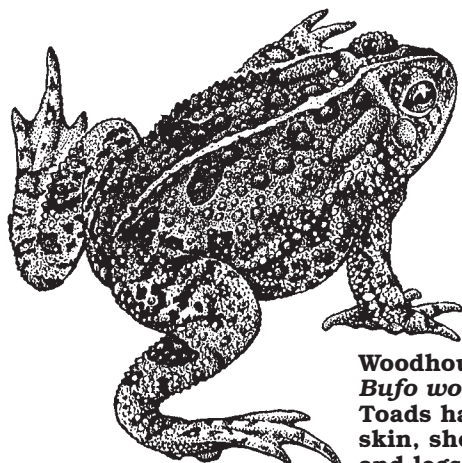
Concentrations of 3 µg/liter (3 ppb) of cis-cypermethrin are lethal within 24 hrs to *R. pipiens* adults. The 48 hr LC50 to *R. temporaria* tadpoles is 6.5 µg/liter, but adverse effects occur at 1 µg/liter (1 ppb), which is near an environmentally relevant concentration. When label rates of alpha-cypermethrin (15 g/ha) were applied to a field, concentration in adjacent ditches were 0.6 µg/liter (0.6 ppb). Concentrations of 10 µg/liter (10 ppb) are 100% lethal to *R. arvalis* tadpoles. Concentrations of 1 µg/liter (1 ppb) decreased hatching rate, lengthened time to metamorphosis, caused deformities and behavioral abnormalities. Concentrations that are sublethal during acute exposure may become lethal during chronic exposure (Gruelich and Pflugmacher 2003).

### Neonicotinoids and Fipronil

Fipronil and the neonicotinoids imidacloprid, clothianidin, and thiamethoxam are less acutely toxic to amphibians than organochlorines, organophosphates and pyrethroids. The 96 hr LC50 of fipronil to *X. laevis* tadpoles is 850 µg/liter (Overmeyer et al. 2007). The LC50 of imidacloprid to *P. trisierra* is 194 mg/liter. But imidacloprid is genotoxic at 50 µg/liter (50 ppb) to *R. nigromaculata* (Gibbons et al. 2015). Some species are more sensitive than others. About 77% of cricket frog tadpoles, *Acris crepitans*, were killed by exposures of 9 mg/liter (9000 ppb) imidacloprid, while green frogs, *Rana clamitans*, showed no mortality (Ade et al. 2010).

Imidacloprid depresses the immune system of bees, fish, and probably amphibians (Mason et al. 2012). Exposure to neonicotinoids and fipronil is widespread (Quarles 2014). Neonicotinoids were found in 23% to 75% of water samples in corn and soybean regions. Maximum concentrations ranged from 42 to 257 ng/liter. Neonicotinoid average concentrations of 100-400 ng/liter, frequent detections at 1000 ng/liter (imidacloprid), and maximum concentrations 46-44,000 ng/liter have been found (Hladik et al. 2014).

Environmentally relevant concentrations of imidacloprid show a large variation. Initial concentrations in rice fields are 240 µg/liter (240 ppb). Runoff from concrete in urban situations can be 3,297 µg/liter (Bonmatin et al. 2015).



**Woodhouse's toad,  
*Bufo woodhousii*.**  
Toads have warty  
skin, short snouts  
and legs.

Drawing from Stebbins 1954



**Pacific tree frog,  
*Hyla regilla*.** Tree  
frogs have round  
toe pads to help  
with climbing.

Drawing from Stebbins 1954

very toxic to adult amphibians, but at concentrations of 0.1 ppb it is an endocrine disruptor in the leopard frog, *R. pipiens*, in the African clawed frog, *Xenopus laevis*, and probably many other species. Exposure leads to feminization of males and gonadal abnormalities. Atrazine is often found in the environment above these concentrations, especially in areas where corn is produced. Concentrations of 250 µg/liter (250 ppb) have been found in agricultural wetlands, and 57 µg/liter (57 ppb) in ponds. In fact, levels of atrazine up to 0.40 ppb are found in rainwater (Hall et al. 1993; Bishop et al. 2010; Hayes et al. 2002; Hayes 2004; Storrs and Kiesecker 2004). EPA software predictions for current application rates are 100 ppb (Rohr and McCoy 2010).

Atrazine is water soluble, persistent, mobile and can travel 1000 km (600 mi) in rainwater. Feminized males have low fertility, and feminized males have been identified in fields where atrazine is used. So, atrazine can lead to amphibian decline through reduced reproduction success (Hayes et al. 2010). Atrazine at levels seen in drinking water (3 ppb) caused reduced survival of tadpoles of four frog species: spring peepers, *Pseudacris crucifer*; American toads, *B. americanus*; green frogs, *R. clamitans*, and wood frogs, *R. sylvatica* (Storrs and Kiesecker 2004). Atrazine (21 ppb in water) also can depress amphibian immune systems, leading to increased problems with ranavirus, trematode infections, and possibly chytrid fungus (Bishop et al. 2010; Sifkarovski et al. 2014; Rohr et al. 2008a). A meta-analysis of about 125 studies found atrazine exposure led to reduced size, reduced antipredator defenses, depressed immune systems, and hormonal problems (Rohr and McCoy 2010). An industry funded study found possible negative effects of atrazine were not supported by the published data (Solomon et al. 2008).

## Roundup and Glyphosate

Application of glyphosate surged from 25 million lbs (11.4 million kg) in 1996 to 180 million lbs (81.8 million kg) in 2007 due to plantings of Roundup Ready GMOs. Glyphosate is an acid, and it is formulated as a salt, so concentrations are often expressed as acid equivalents (ae). Expected environmental concentrations of glyphosate vary between 0.17 mg ae/liter in surface water near soybean fields to 7.6 mg ae/liter with direct overspray of a flooded field (Wagner et al. 2013). Worst case scenarios for surface water range from 1.7 to 5.2 mg ae/liter (Annett et al. 2014). Measured concentrations in ponds range from 0.09 to 1.7 mg ae/liter and in sediments from 0.26 to 19 mg ae/liter (Howe et al. 2004). So, 2 mg ae/liter (2000 ppb) is a reasonable estimate of environmentally relevant amounts of glyphosate and its formulations.

Exposure to 0.57 mg/liter (570 ppb) of Roundup WeatherMAX killed 80% of gray tree frog, *Hyla versicolor* tadpoles. This is well below environmentally possible concentrations. Relyea and Jones (2009) tested Roundup Original Max on 9 tadpole species. They found the 96 hour LC50 ranged from 0.8 to 2 mg ae/liter. Average LC50 of representative formulations for 37 species of tadpoles is 2 mg ae/liter (2000 ppb). Toxic effects increase with pH (Wagner et al. 2013).

Glyphosate formulations are more toxic than glyphosate. The major toxic component of Roundup is polyethoxylated alkylamine (POEA). The LC50 of glyphosate is about 100 mg ae/liter, whereas the 24 hr LC50 of Roundup Original containing POEA to the Pacific chorus frog, *Pseudacris regilla*, is 0.23 mg ae/liter. The Roundup Original formulation is more than 400x more toxic than the active ingredient (Wagner et al. 2013).

POEA formulations at environmentally relevant concentrations were toxic to tadpoles of several common frog species. *R. sylvatica* was the most sensitive. POEA formulations (1.6 mg ae/liter) decreased size and tail length, increased gonadal abnormalities, decreased snout vent length and decrease in rate of development. POEA by itself showed similar toxicity (Howe et al. 2004).

## Roundup Oversprays

The Roundup formulation can be extremely toxic with direct oversprays. Over a period of three weeks, direct oversprays at maximum label rates of artificial outdoor ponds (mesocosms) resulted in 96-100% mortality of three larval amphibian species, the American toad, *B. americanus*; the leopard frog, *R. pipiens*; and the gray tree frog; *H. versicolor*. Direct overspraying of terrestrial life stages at maximum label rates resulted in an average 79% mortality after one day (Relyea 2005a). Single large applications of Roundup Original Max applied earlier in amphibian development had greater effects than smaller, repeated doses. The formulation tended to stratify near the water surface (Jones et al. 2010).

When Roundup, 2,4-D, malathion, and carbaryl (Sevin) were applied by overspray to outdoor mesocosms at maximum label rates, Roundup caused more mortality to tadpoles than the other pesticides over a two week period (Relyea 2005c). Predatory stress made Roundup more toxic (Relyea 2005b). Increased competition for food made Roundup Original Max more toxic to tadpoles of bullfrogs, *R. catesbeiana*, but there was no competition effect for tadpoles of gray treefrogs, *H. versicolor* or green frogs, *R. clamitans* (Jones et al. 2011).

Toxic effects of glyphosate formulations are hotly contested by industry researchers. They argue that the pesticide dissipates into vegetation, soil and sediment, reducing aquatic toxicity (Relyea 2011). Environmental effects are more pronounced in shallow ponds and ephemeral pools than in larger bodies of water where the pesticide can dissipate (Wagner et al. 2013; Edge et al. 2012). But concentrations in sediments (260-19,000 ppb) may be toxic to hibernating frogs (Smyth 1962; Howe et al. 2004).

## Fungicides a Problem

Perhaps due to global warming, fungi are expanding their ranges and becoming more virulent. Fungi normally are more of a problem for plant diseases such as potato late blight. But serious pathogenic fungus attacks on animals are increasing. *Geomyces destructans* has killed about 6 million bats, and the chytrid



## Box C. Fungicides Cause Mortality

Fungicides have been found toxic to amphibians in the laboratory and in simulated natural settings. For instance, the fungicide chlorthalonil at environmentally relevant concentrations of 164 µg/liter (164 ppb) killed amphibians (tadpoles of *Osteopilus* sp. and *Rana* sp.), gastropods, zooplankton, algae and a macrophyte in simulated field conditions. Only insects and crayfish showed no significant mortality. Just 1/1000 of the environmentally relevant concentration was 86% lethal to tadpoles of the southern leopard frog, *Rana sphenocepala*. Chlorthalonil depressed immune systems and elevated corticosterone levels (McMahon et al. 2011). About 7-9 million lbs (3.2 to 4.1 million kg) of chlorthalonil was used in the U.S. in 2007 (EPA 2011).

Other experiments have confirmed the extreme toxicity of chlorthalonil to amphibians, and amphibian die offs were documented after application to cranberries in the field. Chlorthalonil is broadspectrum as it inhibits respiration (McMahon et al. 2011; 2012). It is synergistic with insecticides, causing the death of bees (Zhu et al. 2014; Quarles 2011; Quarles 2014).

Fungicides are everywhere, even in pristine environments. They are more prevalent in tropical areas where chytrid fungus and decline are more pronounced

(Smalling et al. 2013; Ghose et al. 2014). Chlorthalonil is one of the most frequently used pesticides in Central America, and it is found in mountain areas where major declines are occurring (McMahon et al. 2013a).

### Fungicide Toxicity

Environmentally relevant concentrations of pyraclostrobin are 150 µg/liter (150 ppb). Relevant concentrations of trifloxystrobin and propiconazole are 74 µg/liter (74 ppb), and of azoxystrobin, 44 µg/liter (44 ppb) (Hooser et al. 2012). Concentrations of pyraclostrobin (Headline) as low as 15 µg/liter (1/10 label rates) were 100% lethal to *Bufo cognatus* tadpoles. Label rates killed about 65% of adults. Label rates (74 µg/liter) of propiconazole and trifloxystrobin (Stratego) killed about 40% of tadpoles (Belden et al. 2010). There were also chronic effects. Headline at 1.7 µg/liter (1.7 ppb) increased development rates by 5 days (Hartman et al. 2014).

Environmentally relevant concentrations (2 and 11 µg/liter) of the fungicide fenpropimorph led to smaller body size, delayed metamorphosis, and up to 93% *R. temporaria* tadpole mortality (Teplitsky et al. 2005).

fungus *Batrachochytrium dendrobatidis* (Bd) attacks and kills amphibians. Humans have been attacked by *Cryptococcus gatii* in the northwest U.S. *Aspergillus sydowii* is attacking sea animals, and fish are dying from *Aphanomyces* spp. (Fisher et al. 2012).

There has been a dramatic increase in fungicide use. Fungicides applied on 89 million ha (219.8 million acres) of U.S. corn, soybean and wheat increased from 2% of acreage in 2005 to 25-30% in 2009. Fungicides are being applied preventatively and for emerging diseases such as soybean rust, *Phakopsora pachyrhizi*; and other diseases (Belden et al. 2010). For more on fungicides, see Box C.

### Agricultural Pesticides

Amphibians are exposed to pesticides in agricultural situations. Smalling et al. (2015) investigating wetlands near agricultural sites in Iowa found 32 pesticides in the water, 17 in sediments, and 22 in tissues of chorus frogs, *Pseudacris maculata*; and leopard frogs, *Lithobates (Rana) pipiens*. The most common pesticides in the water were the herbicides atrazine, metolachlor, and glyphosate. Average atrazine water concentrations (0.2 µg/liter; 0.2 ppb) were large enough to cause reproductive abnormalities.

Fourteen pesticides were found in sediments, and the most frequent were prometon (herbicide) and metalaxyl (fungicide). About 17 pesticides were found in frog tissues: 8 fungicides, 4 herbicides, and five insecticides. The most frequently detected were the fungicides fluoxastrobin and pyraclostrobin; the herbicide metolachlor, and the insecticide bifenthrin. Maximum whole frog concentrations were 470 µg/kg (470 ppb) wet

weight (Smalling et al. 2015). [Dieldrin is toxic at tissue concentrations of 2-50 ppb. Pyraclostrobin (Headline) is 100% lethal to *Bufo cognatus* tadpoles at water concentrations of 15 ppb (Gilbertson et al. 2003; Albert et al. 2007; Belden et al. 2010).]

### Deformed Frogs

There is less biodiversity and fewer amphibians near agricultural sites than in adjacent nonagricultural habitats (Allran and Karasov 2001). Christin et al. (2013) found that adult leopard frogs, *Rana pipiens*, were smaller in size and weight in areas where agricultural chemicals were applied. The frog's immune system was also affected. Other studies have found endocrine effects causing reproductive problems. Leopard frog populations declined by 50% during the 1980s (Christin et al. 2013; Hayes 2004).

Exposure to pesticides in the laboratory causes deformities, and the general consensus is that amphibian deformities in the U.S. are occurring at increasing frequencies (Johnson et al. 2010). Deformities such as extra legs and missing eyes are often found in amphibians exposed to agricultural chemicals (Collins and Crump 2009). Kiesecker (2002) found pesticides depressed immune systems, encouraging trematode infections. Rohr et al. (2008a) found that atrazine depresses amphibian immune systems, making them more susceptible to trematode infection. Trematodes are known to cause deformity. Abnormalities make amphibians more vulnerable to predators, causing population declines (Collins and Crump 2009).

A meta analysis of 48 studies found environmental pollutants including pesticides caused increased mor-

tality, smaller size, and a 535% increase in abnormalities in amphibians (Egea-Serrano et al. 2012). Another meta analysis of 111 studies found pesticides and fertilizers negatively impacted amphibian growth and survival (Baker et al. 2013).

## Death in the Mountains

Pesticides can be blown from agricultural areas to pristine locations. Pesticide concentrations in mountain soils of Costa Rica are larger than in lowland areas of the country. Pesticides found such as endosulfan, dacthal, and chlorthalonil, are especially toxic to amphibians. Several amphibian species, such as the golden toad, *Bufo perigrines*; and the harlequin frog, *Atelopus varius*, have gone extinct in these mountain areas (Collins and Crump 2009; Daly et al. 2007).

There has been a 95% population decline of the California frogs *Rana muscosa* and *R. sierrae* in the Sierra Nevada. Other frogs such as *R. boylei* are also in decline. Sites of decline are related to the total amount of pesticide use upwind from the site in California's Central Valley (Davidson 2004).

Amphibian decline in California was first noticed about 1970. Applications of DDT and organochlorines in the Central Valley were blown by the wind up to the Sierra Nevadas, and frogs started to die. Declines continued when organochlorines were replaced by organophosphates. Both of these insecticide classes are extremely toxic to amphibians. Surviving frogs are more resistant to their effects. Chlorpyrifos is about 5x more toxic to the vanishing frog, *Rana boylei* (LC50 66.5 µg/liter), than to the surviving frog, *Pseudacris regilla* (LC50 365 µg/liter). Endosulfan is 28x more toxic to *R. boylei* (LC 50 0.55 µg/liter) than to *P. regilla* (LC50 15.6µg/liter) (Sparling et al. 2001; Sparling and Fellers 2009).

## Chlorpyrifos and Endosulfan

Pesticide use in the Central Valley is intense. In 2005, 371 different pesticides were applied in the Sacramento Valley. About 5.9 million kg (13 million lbs) of active ingredients were applied to the San Joaquin Valley in 1995 (Davidson et al. 2012; Sparling et al. 2001).

As a result, at mountain lakes pesticides have been found in the water, sediments, and in frog tissues. Concentrations of chlorpyrifos and endosulfan of 4-12 ng/liter (ppt, parts per trillion) have been found in lakes, chlorpyrifos concentrations of 13 ng/g (13 ppb) and endosulfan 22 ng/g (22 ppb) have been found in *P. regilla* tissues. Chlorpyrifos concentrations of 161 mg/kg (161,000 ppb) and endosulfan concentrations of 48.7 mg/kg (48,700 ppb) have been found in sediments (Sparling and Fellers 2009). According to Sparling and Fellers (2009), "Exposure to chlorpyrifos and endosulfan poses serious risk to amphibians in the Sierra Nevada Mountains."

Amphibian cholinesterase levels are depressed in areas of amphibian decline. About 60-80% of *Hyla (Pseudacris) regilla* populations in affected areas had

>50% depression of cholinesterase enzyme compared to 9-17% depression in less affected areas (Sparling et al. 2001).

The greatest *R. muscosa* decline is found in sites closest to the Valley where historical exposure was likely greatest. Most frequent pesticides detected are chlorpyrifos, endosulfan, chlordane, nonachlor, dacthal, and DDE (Bradford et al. 2011).

At one problem site where frogs had disappeared, efforts to restore the population failed because the healthy frogs introduced to the site died. Dying frogs at the site had larger concentrations of pesticides than the same species obtained from other high elevation sites (Fellers et al. 2004).

Pesticide residues have also been discovered in the Cascades where the Cascades frog, *R. cascadae* is in decline. The most frequently detected residues were endosulfan, dacthal, chlorpyrifos, PCB, chlordane, and nonachlor. Chlorpyrifos, dacthal (herbicide), and endosulfan are still in use (Davidson et al. 2012).

## Other Pesticides

Smalling et al. (2013) found 9 pesticides, including 4 fungicides, in tissues of the Pacific chorus frog, *P. regilla*, at high elevations in California's Sierra Nevada. The sites were downwind from application points in the Central Valley. The most frequent in tissues were the fungicides pyraclostrobin and tebuconazole and the herbicide simazine. Maximum tissue concentrations ranged from 64 to 363 µg/kg (ppb) wet weight. [Toxic tissue concentrations of dieldrin are 2-50 ppb. Lethal water concentrations of pyraclostrobin (Headline) are 15 µg/liter (15 ppb), and the toxic water concentration of atrazine, a triazine related to simazine is 0.1 ppb (Hayes et al. 2003; Belden et al. 2010; Gilbertson et al. 2003).] Degradation products of DDT were also frequently observed. Six pesticides were also found in water (0.2 to 67 ng/liter), and seven pesticides in sediment with concentrations ranging from 2.5 to 430 µg/kg (ppb) dry weight (Smalling et al. 2013). Tissue concentrations did not correlate with amounts in water or sediment, so bioconcentration may have occurred.

Other factors in Sierra Nevada amphibian declines are fish predation and infection with chytrid fungus (Davidson and Knapp 2007; Fellers et al. 2001).

## Emergence of Virulent Chytrid Fungus

The chytrid fungus, *Batrachochytrium dendrobatidis* (Bd), is one of the causes of amphibian decline (Berger et al. 1998; Fisher et al. 2009). It infects keratin on amphibian skin, thickening it and forming sporangia. Sporangia release zoospores into the water that subsequently infect amphibians or crayfish alternate hosts. The fungus may also release toxic chemicals (Rosenblum et al. 2010; McMahon et al. 2013b).

Some species, such as *Rana muscosa*, are extremely susceptible. Laboratory and field infections lead to high mortality. Others, such as the American bullfrog, *Rana catesbeiana*, and the African clawed frog, *Xenopus laevis*, are resistant (Rachowitz et al. 2006). Daszak et al. (2003) see a continuum of effects from infections with

no mortality to mass die offs and declines, possibly assisted by cofactors.

One of the mysteries of Bd is its sudden emergence. It was not noticed until 1998, and was not named until 1999. One theory is that it was present all the time, but suddenly became more virulent due to a weakened host or changing environmental conditions that made virulent strains more fit (Rachowitz et al. 2005). Research on archive collections show that the fungus was present on frogs in California in 1928 (Huss et al. 2013). Archive collections from the U.S. and Canada show it was just as prevalent in the 1960s as the 1990s. So it has likely been around awhile. But earlier it was not associated with mortality (Ouellet et al. 2005).

### Strains Differ in Virulence

Strains isolated from the environment differ in virulence, and one virulent strain shows signs of genetic recombination (Farrer et al. 2011). So the chytrid fungus is still evolving. Sites in the Sierra Nevada show presence of several different genotypes (Morgan et al. 2007). Global warming may have encouraged emergence of virulence (Pounds et al. 2006), although it is hard to establish a causal link (Rohr et al. 2008b).

One idea that has not been explored is that pesticides may have encouraged increased virulence of the fungus. Exposure to antibiotics is known to encourage microbial mutations and production of pathogens (Sci. Amer. 2007; Hussein and Bollinger 2005). Exposure of chytrid fungus to agricultural pesticides is likely in both agricultural and pristine areas. Fungicides are everywhere, even in pristine environments. They are more prevalent in tropical areas where chytrid fungus and decline are more pronounced (Ghose et al. 2014).

In the laboratory, pesticides such as atrazine and chlorthalonil reduce infections of chytrid fungus on tadpoles of *Osteopilus septentrionalis*, and kill the fungus in culture. Amounts used were environmentally relevant with chlorthalonil (0.017 to 1.7 µg/liter) and atrazine (0.016 to 106 µg/liter) (McMahon et al. 2013a). Glyphosate formulations can also kill the fungus (Hanlon et al. 2012).

When a fungus is exposed to lethal chemicals, this can be a stimulus for production of more resistant and possibly more virulent strains. More virulent strains of pathogens may have a competitive advantage (de Roode et al. 2005). Some fungi have obviously been affected. For instance, *Aspergillus fumigatus*, which infects humans, is resistant to agricultural azole fungicides (Verweij et al. 2007).

Effects of pesticides on community ecology may be a factor. Organophosphates kill water fleas, *Daphne* spp., that feed on the infective zoospores of Bd (Relyea and Hoverman 2008). Zoospores can live for 7 weeks, plenty of time for exposure to pesticides and predators (Fisher et al. 2009).

Another idea is that pesticides may have depressed amphibian immune systems, making them more susceptible (Gilbertson et al. 2003; Rohr et al. 2008a; Kiesecker 2011). Skin peptide defenses of *R. boylei*

against Bd are depressed by carbaryl (Davidson et al. 2007). Other experiments, using tadpoles, which are not normally killed by the fungus, (McMahon et al. 2013a; Buck et al. 2012; Gaietto et al. 2014), or juveniles of species resistant to the fungus (Paetow et al. 2012; Edge et al. 2013) have not been able to confirm the hypothesis.

### Conclusion

Environmentally relevant concentrations of pesticides are killing amphibians. Low concentrations are causing direct mortality, reproductive problems, and increased susceptibility to pathogens. Pesticides are a major cause of amphibian decline.

### Acknowledgement

The author wishes to thank Erin Berg for helping with the research on this article.

---

*William Quarles, Ph.D., is an IPM Specialist, Executive Director of the Bio-Integral Resource Center (BIRC), and Managing Editor of the IPM Practitioner. He can be reached by email, birc@igc.org.*

### References

- Adams, M.J., D.A.W. Miller, E. Muths et al. 2013. Trends in amphibian occupancy in the United States. *PLoS ONE* 8(5):E64347.
- Ade, C.M., M.D. Boone and J.J. Puglis. 2010. Effects of an insecticide and potential predators on green frogs and northern cricket frogs. *J. Herpetol.* 44(4):501-600.
- Albert, A. K. Drouillard, G.D. Haffner et al. 2007. Dietary exposure to low pesticide doses causes longterm immunosuppression in the leopard frog, *Rana pipiens*. *Environ. Tox. Chem.* 26(6):1179-1185.
- Allran, J.W. and W.H. Karasov. 2001. Effects of atrazine on embryos, larvae, and adults of anuran amphibians. *Environ. Tox. Chem.* 20(4):769-775.
- Annett, R., H.R. Habibi and A. Hontela. 2014. Impact of glyphosate and glyphosate based herbicides on the freshwater environment. *J. Appl. Toxicol.* 34:458-479.
- Attenborough, D. 2008. *Life in Cold Blood*. Princeton University Press, Princeton, NJ. 288 pp.
- Baker, N.J., B.A. Bancroft and T.S. Garcia. 2013. A meta-analysis of the effects of pesticides and fertilizers on survival and growth of amphibians. *Sci. Total Environ.* 449:150-156.
- Becker, C.G., C.R. Fonseca, C.F.B. Haddad et al. 2007. Habitat split and the global decline of amphibians. *Science* 318:1775-1777.
- Belden, J., S. McMurry, L. Smith et al. 2010. Acute toxicity of fungicide formulations to amphibians at environmentally relevant concentrations. *Environ. Tox. Chem.* 29(11):2477-2480.
- Berger, L., R. Speare, P. Daszak et al. 1998. Chytridiomycosis causes amphibian mortality associated with population declines in the rain forests of Australia and Central America. *Proc. Natl. Acad. Sci. USA* 95:9031-9036.
- Bishop, C.A., T.V. McDaniel, and S.R. deSolla. 2010. Atrazine in the environment and its implications for amphibians and reptiles. In: D.W. Sparling, G. Linder, C.A. Bishop et al. eds. *Ecotoxicology of Amphibians and Reptiles*, 2<sup>nd</sup> ed. pp. 258-259 of 916 pp.
- Bonmatin, J.M., C. Glorio, V. Girolami et al. 2015. Environmental fate and exposure: neonicotinoids and fipronil. *Environ. Sci. Pollut. Res.* 22:35-67.
- Boone, M. and R.D Semlitsch. 2002. Interactions of an insecticide with competition and pond drying in amphibian communities. *Ecol. Appl.* 12(1):307-316.
- Bradford, D.F., R.A. Knapp, D.W. Sparling et al. 2011. Pesticide distributions and population declines of California USA alpine frogs, *Rana muscosa* and *Rana sierrae*. *Environ. Tox. Chem.* 30(3):682-691.
- Bruhl, C.A., S. Pieper and B. Weber. 2011. Amphibians at risk? Susceptibility of terrestrial amphibian life stages to pesticides. *Environ. Tox. Chem.* 30:2465-2472.
- Bruhl, C.A., T. Schmidt, S. Pieper et al. 2013. Terrestrial pesticide exposure

- of amphibians: an unrecognized cause of global decline? *Sci. Rpts.* 3: 1135
- Buck, J.C., E.A. Scheessele, R.A. Relyea et al. 2012. The effects of multiple stressors on wetland communities: pesticides, pathogens and competing amphibians. *Freshwater Biol.* 57:61-73.
- Christin, M.S., A.D. Gendron, P. Brousseau et al. 2003. Effects of agricultural pesticides on the immune system of *Rana pipiens* and on its resistance to parasitic infections. *Environ. Tox. Chem.* 22(5):1127-1133.
- Christin, M.S., L. Menard, A.D. Gendron et al. 2004. Effects of agricultural pesticides on the immune system of *Xenopus laevis* and *Rana pipiens*. *Aquatic Tox.* 67:33-43.
- Christin, M.S., L. Menard, I. Giroux et al. 2013. Effects of agricultural pesticides on the health of *Rana pipiens* frogs sampled from the field. *Environ. Sci. Pollut. Res.* 20:601-611.
- Collins, J.P. and M.L. Crump. 2009. *Extinction in Our Times: Global Amphibian Decline*. Oxford University Press. New York. 273 pp.
- Cottrhan, R.D., J.M. Brown, R.A. Relyea et al. 2013. Proximity to agriculture is correlated with pesticide tolerance: evidence for the evolution of amphibian resistance to modern pesticides. *Evol. Appl.* 6:832-841.
- Daly, G.L., Y.D. Lei, C. Teixeira et al. 2007. Accumulation of current use pesticides in neotropical montane forests. *Environ. Sci. Technol.* 41(4):1118-1123.
- Daszak, P., A.A. Cunningham, A.D. Hyatt et al. 2003. Infectious disease and amphibian population declines. *Diversity and Distributions* 9:141-150.
- Davidson, C. 2004. Declining downwind: amphibian declines in California and historical pesticide use. *Ecol. Appl.* 14:1892-1902.
- Davidson, C. and R.A. Knapp. 2007. Multiple stressors and amphibian declines: dual impacts of pesticides and fish on yellow-legged frogs. *Ecol. Appl.* 17:587-597.
- Davidson, C., M.F. Benard, H.B. Shaffer et al. 2007. Effects of chytrid and carbaryl exposure on survival, growth, and skin peptide defenses in foothill yellow legged frogs. *Environ. Sci. Technol.* 41:1771-1776.
- Davidson, C., K. Stanley and S.M. Simonich. 2012. Contaminant residues and declines of the Cascades frog, *Rana cascadae*, in the California Cascades, USA. *Environ. Tox. Chem.* 31(8):1895-1902.
- De Roode, J.C., R. Pansini, S.J. Cheeseman et al. 2005. Virulence and competitive ability in genetically diverse malaria infections. *PNAS* 102(21):7624-7628.
- DPR (California Department of Pesticide Regulation). 2012. *Pesticides Sold in California for the Year 2012. Combined Active Ingredients by Chemical Name*.
- Edge, C.B., D.G. Thompson, C. Hao et al. 2012. A silviculture application of the glyphosate-based herbicide VisionMax to wetlands has limited direct effects on amphibian larvae. *Environ. Tox. Chem.* 11(10):2375-2383.
- Edge, C.B., M.K. Gahl, D.G. Thompson et al. 2013. Laboratory and field exposure of two species of juvenile amphibians to a glyphosate based fungicide and *Batrachochytrium dendrobatidis*. *Sci. Total Environ.* 444:145-152.
- Egea-Serrano, A., R.R. Relyea, M. Tejedo et al. 2012. Understanding of the impact on chemicals on amphibians: a meta-analytic review. *Ecol. Evol.* 2(7):1382-1397.
- EPA (Environmental Protection Agency). 2011. *Pesticide Industry Sales and Usage: 2006 and 2007 Market Estimates*. EPA, Washington. 33 pp.
- Farrer, R.A., L.A. Weinert, J. Bielby et al. 2011. Multiple emergences of genetically diverse amphibian infecting chytrids include a globalized hypervirulent recombinant lineage. *PNAS* 108(46):18732-18736.
- Fellers, G.M., D.E. Green and J.E. Longcore. 2001. Oral chytridiomycosis in the mountain yellow legged frog. *Copeia* 4:945-953.
- Fellers, G.M., L.L. McConnell, D. Pratt et al. 2004. Pesticides in mountain yellow-legged frogs, *Rana muscosa*, from the Sierra Nevada mountains in California, USA. *Environ. Toxicol. Chem.* 23:2170-2177.
- Feng, S., Z. Kong, X. Wang et al. 2004. Acute toxicity and genotoxicity of two novel pesticides on amphibian, *Rana N Hallowell*. *Chemosphere* 56:457-463. [CAB Abstracts]
- Fisher, M.C., T.W.J. Garner and S. Walker. 2009. Global emergence of *Batrachochytrium dendrobatidis* and amphibian chytridiomycosis in space, time and host. *Annu. Rev. Microbiol.* 53:291-310.
- Fisher, M.C., D.A. Henk, C.J. Briggs et al. 2012. Emerging fungal threats to animal, plant and ecosystem health. *Nature* 484:184-194.
- Gaetano, K.M., S.L. Rumschlag and M.D. Boone. 2014. Effects of pesticide exposure and the amphibian chytrid fungus on gray treefrog (*Hyla chrysoscelis*) metamorphosis. *Environ. Tox. Chem.* 33(10):2358-2362.
- Ghose, S.L., M.A. Donnelly, J. Kerby et al. 2014. Acute toxicity tests and meta-analysis identify gaps in tropical ecotoxicology for amphibians. *Environ. Tox. Chem.* 33(9):2114-2110.
- Gibbons, D., C. Morrissey and P. Mineau. 2015. A review of the direct and indirect effects of neonicotinoids and fipronil on vertebrate wildlife. *Environ. Sci. Pollut. Res.* 22:103-118.
- Giesy, J.P. and K.R. Solomon, eds. 2014. *Ecological Risk Assessment of Chlorpyrifos in Terrestrial and Aquatic Systems in the U.S.* Springer, New York. 269 pp.
- Gilbertson, M., G.D. Haffner, K.G. Drouillard et al. 2003. Immunosuppression in northern leopard frog, *Rana pipiens*, induced by pesticide exposure. *Environ. Toxicol. Chem.* 22:101-110.
- Gilliom, R.J. 2007. Pesticides in U.S. streams and groundwater. *Environ. Sci. Technol.* May 15:3409-3414.
- Gilliom, R.J., J.E. Barbash and C.G. Crawford et al. 2006. rev. 2007. *Pesticides in the Nation's Streams and Ground Water, 1992-2001*. USGS Circular 1291. <http://pubs.usgs.gov/circ/2005/1291/>
- Goodrum, P., W.P. Baldwin, J.W. Aldrich. 1949. Effect of DDT on animal life of Bull's Island South Carolina. *J. Wildl. Man.* 13(1):1-10. [CAB Abstracts]
- Greulich, K. and S. Pflugmacher. 2003. Differences in susceptibility of different life stages of amphibians to pesticide exposure. *Aquatic Toxicol.* 65:329-336.
- Hall, J.C., T.D. van Deynze, J. Struger et al. 1993. Enzyme immunoassay based survey of precipitation and surface water for the presence of atrazine, metolachlor and 2,4-D. *J. Environ. Sci. Health. PartB* 28(5):577-598.
- Hanlon, S.M. and M.J. Parris. 2012. The impact of pesticides on the pathogen *Batrachochytrium dendrobatidis* independent of potential hosts. *Arch. Environ. Contam. Toxicol.* 63:137-143.
- Harris, R.N., R.M. Brucker, J.B. Walke et al. 2009. Skin microbes on frogs prevent morbidity and mortality caused by a lethal skin infection. *The ISME Journal* 3:818-824.
- Hartman, E.A.H., J.B. Belden, L.M. Smith et al. 2014. Chronic effects of strobilurin fungicides on development, growth, and mortality of the larval Great Plains toads, *Bufo cognatus*. *Ecotoxicol.* 23:396-403.
- Hayes, T.B., A. Collins, M. Lee et al. 2002. Hermaphroditic, demasculinized frogs after exposure to the herbicide atrazine at low ecologically relevant doses. *PNAS* 99(8):5476-5480.
- Hayes, T.B., K. Haston, M. Tsui et al. 2003. Atrazine induced hermaphroditism at 0.1 ppb in American leopard frogs, *R. pipiens*: laboratory and field evidence. *Environ. Health Perspectives* 111(4):568-575.
- Hayes, T.B. 2004. There is no denying this: defusing the confusion about atrazine. *BioScience* 54(12):1138-1149.
- Hayes, T.B., P. Case, S. Chui et al. 2006. Pesticide mixtures, endocrine disruption, and amphibian declines: are we underestimating the impact? *Environ. Health Perspectives* 114(Suppl. 1):40-50.
- Hayes, T.B., P. Falso, S. Gallepeau et al. 2010. The cause of global amphibian declines: a developmental endocrinologist's perspective. *J. Exp. Biol.* 213:921-933.
- Hladik, M.L., D.W. Kolpin and K.M. Kuivila. 2014. Widespread occurrence of neonicotinoid insecticides in streams in a high corn and soybean producing region, USA. *Environ. Pollution* 193:189-196.
- Hooser, E.A., J.B. Belden, L.M. Smith et al. 2012. Acute toxicity of three strobilurin fungicide formulations and their active ingredients to tadpoles. *Ecotoxicol.* 21:1458-1464.
- Howe, C.M., M. Berrill, B.D. Pauli et al. 2004. Toxicity of glyphosate based pesticides to four North American frog species. *Environ. Tox. Chem.* 23(8):1928-1938.
- Huss, M., L. Huntley, V. Vredenburg, et al. 2013. Prevalence of *Batrachochytrium dendrobatidis* in 120 archived specimens of *Lithobates catesbeianus* (American bullfrog) collected in California, 1924-2007. *EcoHealth* 10(4):339-343.
- Hussein, H.S and L.M. Bollinger. 2005. Prevalence of Shiga toxin producing *E. coli* in beef. *Meat Sci.* 71(4):676-689.
- Johnson, P.T.J., M.K. Reeves, S.K. Krest et al. 2010. A decade of deformities: advances in our understanding of amphibian malformations and their implications. In: D.W. Sparling, G. Linder, C.A Bishop et al. eds. *Ecotoxicology of Amphibians and Reptiles*, 2<sup>nd</sup> ed. pp. 511-536 of 916 pp.
- Jones, D.K., J.I. Hammond and R.A. Relyea. 2009. Very highly toxic effects of endosulfan across nine species of tadpoles: lag effects and family level sensitivity. *Environ. Tox. Chem.* 28(9):1939-1945.
- Jones, D.K., J.I. Hammond and R.A. Relyea. 2010. Roundup and amphibians: the importance of concentration, application time and stratification. *Environ. Tox. Chem.* 29(9):2016-2025.
- Jones, D.K., J.L. Hammond and R.A. Relyea. 2011. Competitive stress can make the herbicide Roundup more deadly to larval amphibians. *Environ. Tox. Chem.* 30(2):446-454.
- Kiesecker, J.M. 2002. Synergism between trematode infection and pesticide exposure: a link to amphibian limb deformities in nature? *PNAS* 99(15):9900-9904.
- Kiesecker, J.M. 2011. Global stressors and the global decline of amphibians: tipping the

- stress immunocompetency axis. *Ecol. Res.* 26:897-908.
- Lavorato, M., B. Bernabo, A. Crescente et al. 2013. Endosulfan effects on *Rana dalmatina* tadpoles: quantitative developmental and behavioural analysis. *Arch. Environ. Contam. Toxicol.* 64:253-262.
- Mann, R.M., R.V. Hyne, C.B. Choung et al. 2009. Amphibians and agricultural chemicals: review of the risks in a complex environment. *Environ. Pollution* 157:2903-2927.
- Mason, R., H. Tennekes, F. Sanchez-Bayo et al. 2012. Immune suppression by neonicotinoid insecticides at the root of global wildlife declines. *J. Environ. Immunol. Toxicol.* 1:3-12.
- McMahon, T.A., N.T. Halstead, S. Johnson et al. 2011. The fungicide chlorothalonil is nonlinearly associated with cortisone levels, immunity, and mortality in amphibians. *Environ. Health Perspectives* 119(8):1098-1103.
- McMahon, T.A., N.T. Halstead, S. Johnson et al. 2012. Fungicide induced declines of freshwater diversity modify ecosystem functions and services. *Ecol. Letters* 15:714-722.
- McMahon, T.A., J.M. Romansic and J.R. Rohr. 2013a. Nonmonotonic and monotonic effects of pesticides on the pathogenic fungus *Batrachochytrium dendrobatidis* in culture and on tadpoles. *Environ. Sci. Technol.* 47:7958-7964.
- McMahon, T.A., L.A. Brannelly, M.W.H. Chatfield et al. 2013b. Chytrid fungus *Batrachochytrium dendrobatidis* has non-amphibian hosts and releases chemicals that cause pathology in the absence of infection. *PNAS* 110(1):210-215.
- Morgan, J.A.T., V. T. Vredenburg, L.J. Rachowicz et al. 2007. Population genetics of the frog killing fungus, *Batrachochytrium dendrobatidis*. *PNAS* 104(34):13845-13850.
- NPIC (National Pesticide Information Center). 2000. DDT Factsheet. National Pesticide Information Center, 6 pp.
- NPIC (National Pesticide Information Center). 2009. Permethrin Technical Fact Sheet. National Pesticide Information Center. 10 pp.
- Ouellet, M., I. Mikaelian, B.D. Pauli et al. 2005. Historical evidence of widespread chytrid infection in North American amphibian populations. *Conserv. Biol.* 19(5):1431-1440.
- Overmeyer, J.P., D.R. Rouse, J.K. Avants et al. 2007. Toxicity of fipronil and its enantiomers to marine and fresh water targets. *J. Environ. Sci. Health Part B* 42:471-480.
- Paetow, L.J., J.D. McLaughlin, R.I. Cue et al. 2012. Effects of herbicides and the chytrid fungus *Batrachochytrium dendrobatidis* on the health of post metamorphic northern leopard frogs, *Lithobates pipiens*. *Ecotoxicol. Environ. Safety* 80:372-380.
- Pounds, J.A., M.R. Bustamante, L.A. Coloma et al. 2006. Widespread amphibian extinctions from epidemic disease driven by global warming. *Nature* 439(12):161-167.
- Quarles, W. 2011. Pesticides and honey bee death and decline. *IPM Practitioner* 23(1/2):1-8.
- Quarles, W. 2012. Pyrethroid perimeter sprays in structural pest control. *IPM Practitioner* 23(5/6):1-9.
- Quarles, W. 2014. Protecting bees, birds and beneficial insects from neonicotinoids. *Common Sense Pest Control Quarterly* 28(1-4):3-19.
- Rachowicz, L.J., J.M. Hero, R.A. Alford et al. 2005. The novel and endemic pathogen hypotheses: competing explanations for the origin of emerging infectious diseases of wildlife. *Conserv. Biol.* 19(5):1441-1448.
- Rachowicz, L.J., R.A. Knapp, J.A.T. Morgan et al. 2006. Emerging infectious disease as the proximate cause of amphibian mass mortality. *Ecology* 87(7):1671-1783.
- Relyea, R. 2004. Growth and survival of five amphibian species exposed to combinations of pesticides. *Environ. Tox. Chem.* 23(7):1737-1742.
- Relyea, R.A. 2005a. The lethal effect of Roundup on aquatic and terrestrial amphibians. *Ecol. Appl.* 15(4):1118-1124.
- Relyea, R.A. 2005b. The lethal impacts of Roundup and predatory stress on six species of North American tadpoles. *Arch. Environ. Contam. Toxicol.* 48:361-357.
- Relyea, R.A. 2005c. The impact of insecticides and herbicides on the biodiversity and productivity of aquatic communities. *Ecol. Appl.* 15(2):618-627.
- Relyea, R.A. and J.T. Hoverman 2008. Interactive effects of predators and a pesticide on aquatic communities. *Oikos* 117:1647-1658.
- Relyea, R.A. 2009. A cocktail of contaminants: how mixtures of pesticides at low concentrations affect aquatic communities. *Oecologia* 159:363-376.
- Relyea, R.A. and D.K. Jones. 2009. The toxicity of Roundup Original Max to 13 species of larval amphibians. *Environ. Tox. Chem.* 28(9):2004-2008.
- Relyea, R.A. 2011. Amphibians are not ready for Roundup. In: J.E. Elliot et al. eds. *Wildlife Ecotoxicology: Forensic Approaches*. Springer, New York, pp. 267-300.
- Rohr, J.R., A.M. Schotthoefer, T.R. Raffel et al. 2008a. Agrochemicals increase trematode infections in a declining amphibian species. *Nature* 455(30):1235-1240.
- Rohr, J.R., T.R. Raffel, J.M. Romansic et al. 2008b. Evaluating the link between climate, disease spread, and amphibian declines. *PNAS* 105(45):17436-17441.
- Rohr, J.R. and K.A. McCoy. 2010. A qualitative meta-analysis reveals consistent effects of atrazine on freshwater fish and amphibians. *Environ. Health Perspectives* 118(1):20-32.
- Rosenblum, E.B., J. Voyles, T.J. Poorten et al. 2010. The deadly chytrid fungus: a story of an emerging pathogen. *PLoS Pathogens* 6(1): e1000550.
- Rubbo, M.J. and J.M. Kiesecker. 2005. Amphibian breeding distribution in an urbanized landscape. *Conserv. Biol.* 19(2):504-511.
- Sci. Amer. (Scientific American). 2007. Meet resistance head-on. *Sci. Amer.* 296(1):8.
- Schuytema, G.S. and A.V. Nebeker 1996. *Amphibian Toxicity Data for Water Criteria Chemicals*. Environmental Protection Agency, Rpt. No. EPA/600/R-96/124, August 1996. 215 pp.
- Sifkarovski, J., L. Grayfer, F. Andino et al. 2014. Negative effects of low dose atrazine exposure on the development of effective immunity to FV3 in *Xenopus laevis*. *Devel. Compar. Immunol.* 47(1):52-58. [CAB Abstracts]
- Smalling, K.L., G.M. Fellers, P.M. Kleeman et al. 2013. Accumulation of pesticides in pacific chorus frogs, *Pseudacris regilla*, from California's Sierra Nevada mountains, USA. *Environ. Tox. Chem.* 32(9):2026-2034.
- Smalling, K.L., R. Reeves, E. Muths et al. 2015. Pesticide concentrations in frog tissue and wetland habitats in a landscape dominated by agriculture. *Sci. Total Environ.* 502:80-90.
- Smyth, H.R. 1962. *Amphibians and their Ways*. Macmillan, New York. 292 pp.
- Solomon, K.R., J.A. Carr, L.H. du Preez et al. 2008. Effects of atrazine on fish, amphibians, and aquatic reptiles: a critical review. *Crit. Rev. Toxicol.* 38:721-772.
- Sparling, D.W., G.M. Fellers and L.L. McConnell. 2001. Pesticides and amphibian population declines in California USA. *Environ. Tox. Chem.* 20(7):1591-1596.
- Sparling, D.W. and G.M. Fellers. 2007. Comparative toxicity of chlorpyrifos, diazinon, malathion and their oxon derivatives to larval *Rana boylei*. *Environ. Pollution* 147:535-539.
- Sparling, D.W. and G.M. Fellers. 2009. Toxicity of two insecticides to California USA anurans and its relevance to declining amphibian populations. *Environ. Tox. Chem.* 28(8):1696-1703.
- Stebbins, R.C. 1954. *Amphibians and Reptiles of Western North America*. McGraw Hill, New York. 536 pp.
- Storrs, S.I. and J.M. Kiesecker. 2004. Survivorship patterns of larval amphibians exposed to low concentrations of atrazine. *Environ. Health Perspectives* 112(1):1054.
- Stuart, S.N., J.S. Chanson, N.A. Cox et al. 2004. Status and trends of amphibian declines and extinctions worldwide. *Science* 306:1783-1786.
- Teplitsky, C., H. Pihla, A. Laurila et al. 2005. Common pesticide increases costs of antipredator defenses in *Rana temporaria* tadpoles. *Environ. Sci. Technol.* 39:6079-6085.
- Todd, B.D., C.M. Bergeron, M.J. Hepner et al. 2011. Aquatic and terrestrial stressors in amphibians: a test of the double jeopardy hypothesis based on maternally and trophically derived contaminants. *Environ. Tox. Chem.* 30(1):2277-2284.
- USGS (United States Geological Survey). 2014a. Neonicotinoid insecticides documented in Midwestern U.S. streams. U.S. Department of Interior, Washington. 3 pp.
- USGS (United States Geological Survey). 2014b. Understudied fungicides common in U.S. streams draining agricultural lands. U.S. Department of Interior, Washington. 3 pp.
- Van Meter, R.J., D.A. Glinski, T. Hong et al. 2014. Estimating terrestrial amphibian pesticide body burden through dermal exposure. *Environ. Pollution* 193:262-268.
- Verweij, P.E., E. Mellado and W.J.G. Melchers. 2007. Multiple triazole resistant aspergillo-sis. *N. Engl. J. Med.* 356:1481-1483.
- Wagner, N., W. Reichenbecher, H. Teichmann et al. 2013. Questions concerning the potential impact of glyphosate based herbicides on amphibians. *Environ. Toxicol. Chem.* 32(8):1688-1700.
- Zalom, F.G., N.C. Toscano, F.J. Byrne. 2005. Managing resistance is critical to future use of pyrethroids and neonicotinoids. *Calif. Agric.* 59(1):11-15.
- Zhu, W., D.R. Schmeihl, C.A. Mullin et al. 2014. Four common pesticides, their mixtures, and a formulation solvent in the hive environment have a high oral toxicity to honey bee larvae. *PLoS One*: January 8, 2014. 12pp.

# Protecting Amphibians from Pesticides

By William Quarles

Pesticides, along with habitat destruction, global warming and diseases are causing amphibian decline and destruction (Quarles 2007a; Stuart et al. 2004; Collins and Crump 2009). Amphibians are sensitive to all classes of pesticides including insecticides, fungicides, and herbicides. A review of the literature (see first article) shows that herbicides such as glyphosate and atrazine, insecticides such as endosulfan and chlorpyrifos, and fungicides such as chlorthalonil and pyraclostrobin are likely having an impact.

Glyphosate and atrazine are overused. Together, they represent about 30% of all conventional pesticides applied in the U.S. (EPA 2011). Atrazine has been banned in Europe because it contaminates groundwater. Environmentally relevant water concentrations in the U.S. are 100 ppb; concentrations up to 3 ppb are allowed in drinking water; and it causes hormonal disruption in amphibians at 0.1 ppb (Hayes et al. 2003; Rohr and McCoy 2010). Glyphosate itself may not be causing problems, but Roundup® formulations containing POEA are especially toxic (Wagner et al. 2013). Removing atrazine from the market, and restricting the most toxic formulations of glyphosate could help protect amphibians.

Endosulfan is one of the few organochlorine insecticides left on the market. DDT and most of its relatives have been banned due to toxicity and persistence. Environmentally relevant water concentrations of endosulfan can be lethal. Restricting the use of endosulfan could help protect amphibians. Amounts of chlorpyrifos in surface waters are low, but toxic amounts can accumulate in frog tissues and sediments (Sparling and

Fellers 2009). A reduction of chlorpyrifos use could help protect amphibians.

Amphibians could also benefit from fewer applications of chlorthalonil. Chlorthalonil is extremely toxic to amphibians and is also synergistic with other pesticides, contributing to honey bee decline and colony collapse disorder (McMahon et al. 2011; Zhu et al. 2014; Quarles 2011).

Because the EPA does not require amphibian toxicity testing to register a pesticide, there are many data gaps, especially for new products. The EPA should require amphibian testing before pesticide registration, and sensitive species should be used to document the worst case scenarios.

## How to Protect Amphibians

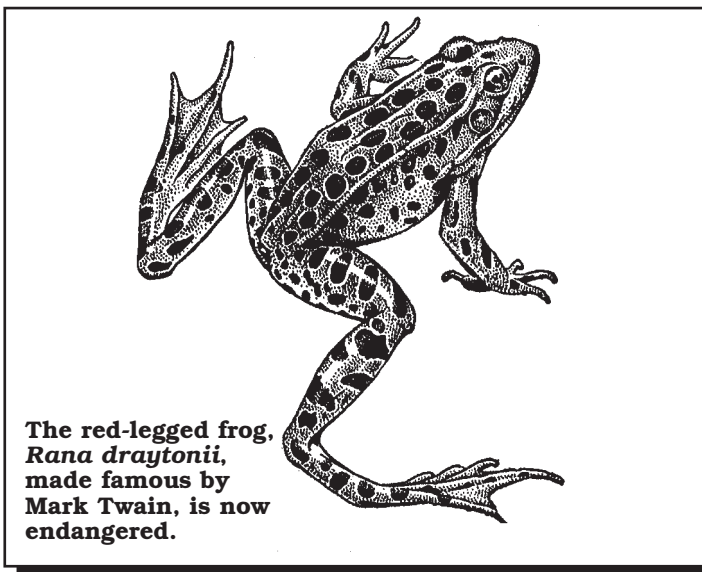
Most pesticides are used in agriculture. Less pesticide would be used if IPM methods including monitoring, crop rotation, windbreaks, conservation biocontrol, intercropping and other techniques were adopted (Flint and Roberts 1988; Gray 2011; Morandin et al. 2011; Liebman et al. 2008; Long et al. 1998; Quarles 2014). But monocultures of GMOs are firmly entrenched in U.S. agriculture, and they have the support of U.S. government regulators (Quarles 2012a). We can encourage change by voicing our opinions in public discourse and buying organic food.

Insecticides are often used for mosquito control. We can help amphibians by asking our mosquito control districts to use larval control methods with biopesticides such as *Bacillus thuringiensis israelensis* (BTI) (Quarles 2001a). In our backyard gardens, we can treat water with BTI Mosquito Dunks (see Resources). That way, we can maintain water sources for amphibians without breeding mosquitoes. Encouraging frogs has an added benefit of mosquito biocontrol, as mosquitoes are the favorite food of many adult frogs (Smyth 1962).

We can make an impact on the 66 million lbs (30 million kg) of pesticide active ingredients used in the home and garden. By using alternatives to herbicides, fungicides and insecticides in our gardens, we can help amphibian recovery in urban and suburban areas (Quarles 2001bc; 2004ab). (see below)

By carefully choosing plants, and crafting habitat, we can make our gardens wildlife refuges. Not only can we encourage amphibians, we can garden for birds, bees, butterflies and other wildlife. These wild creatures are just as important as plants for garden aesthetics (Quarles 2014; Olkowski et al. 2013).

To save space, many IPM techniques are described here, but details are not given. References, however, have been provided. Many of these publications are available at the BIRC website, [www.birc.org](http://www.birc.org).



**The red-legged frog, *Rana draytonii*, made famous by Mark Twain, is now endangered.**

Drawing from Stebbins 1954

## Backyard Water Garden

We can establish backyard water gardens full of aquatic plants (Fowler 2013). These gardens can provide water for birds, bees, beneficial insects, and amphibians. On a larger scale, we can help restore wetlands in our immediate area. Restoring wetlands can help preserve amphibians, and also birds and other



Drawing by Diane Kuhn

**Herbicides should be avoided. Cultural methods such as hoeing and mulching can help control weeds.**

wildlife will benefit. If you want to help, many resources are available, including a publication of the EPA and NOAA called *Wetland Creation, Conservation and Enhancement*. This publication has a list of organizations working on wetland conservation (NOAA 2001).

## Stop Using Herbicides

About 43 million lbs (19.5 million kg) of herbicide active ingredients each year are used in home lawns and gardens (EPA 2011). Most of the herbicides are applied for weeds on lawns. Today there are about 58 million lawns covering 25 million acres (10.1 million ha) (Steinberg 2006).

One way to reduce herbicides is to replace your lawn with native plants and alternative landscaping. This approach is outlined in the BIRC publication *Rethinking the American Lawn* (Quarles 2009c). Lawns can be sheet mulched, and replaced with low maintenance ornamentals. To sheet mulch, mow or knock down vegetation. Add compost and manure, then cover with sheets of cardboard. Then add another layer of compost and organic mulch. Holes are made in the mulch, so that plants can be established (Quarles 2008).

If you need to keep your lawn, you can use organic methods and alternative herbicides that have less of an impact on amphibians (Quarles 2003a; 2009a). Alternative herbicides include soap, corn gluten meal, vinegar, essential oils, iron chelates, and a number of new microbial formulations (Quarles 2010).

In the garden, weeds can be eliminated by changes in landscape design, cultural methods such as mulching, mechanical methods such as hoeing, and alternative

herbicides as a last resort (Quarles 2008; Quarles 2003b). In some situations, flaming or thermal weed control may be appropriate. Flaming is most effective for broadleaf annual weeds and is less effective for perennials and grasses. Groundsel, *Senecio vulgaris*; and lambsquarters, *Chenopodium album*, are most susceptible (Quarles 2004b).

## Landscape Design

Weeds can be designed out of ornamental beds by proper choice of plants. Groundcovers, trees, and shrubs can be used to shade the ground so weeds will not grow. Newly planted shrub beds can be seeded with fast-growing annuals such as sweet alyssum, *Lobularia maritima*; farewell-to-spring, *Clarkia amoena*; and scarlet flax, *Linum grandiflorum* var. *rubrum* to smother and crowd out weeds. Fast-growing groundcovers can be used along pathways and in areas hard to access and cultivate (Daar 1995).

In landscapes, intelligent use of irrigation water can minimize weeds. Drip irrigation allows water to be delivered only to ornamentals, not to weeds. Pruning and shaping plants to increase their vigor will help reduce weed germination and growth (Elmore 1993).

Flowers can be chosen that suppress weeds. For instance, sunflowers are allelopathic, and root exudates tend to suppress competing weeds. Shrubs such as manzanita, *Arctostaphylos glauca*; *Salvia leucophylla*; *S. apiana*; *S. millifera*, and *Artemisia californica* will suppress annual weeds. Weeds can also be suppressed in new plantings by landscape fabrics or other mulches (see below)(Quarles 2003b).

## Native Plants

A good weed control strategy is to remove weeds by cultivation and replant with hardy native species adapted to the site. California alone has 5,000 species of native plants belonging to more than 1100 genera, and other states also have a rich botanical bounty. Native plants are generally very hardy, and hardy plants compete well against aggressive exotic weeds. In California, some lawns have been entirely replaced by plantings of California poppy, *Eschscholzia californica*, and other native plants.



Photo by Geoff Hall, Sentient Landscape

**Sheet mulching can be used to eliminate a lawn.**

For groundcovers and borders to crowd out invasive weeds, California has 31 native *Clarkia* spp. These free-flowering annuals bloom from late spring and into summer. They can be grown from seed and will thrive in sunny areas. Especially striking is red ribbons *Clarkia*, *C. concinna*. Other good native annual ground covers are blue lips, *Collinsia grandiflora*; California gilia, *G. achilleaefolia*; tidy tips, *Layia* spp.; and baby blue eyes, *Nemophila menziesii* (Schmidt 1980). Some of these plants also encourage beneficial insects (Quarles and Grossman 2002).

Drought-resistant plants such as native fremontia, *Fremontia californicum*; California lilacs, *Ceanothus* spp.; sages, *Salvia* spp., buckwheats, *Eriogonum* spp.; and manzanitas, *Arctostaphylos* spp. can be planted to crowd out invasive weeds. Difficult areas such as slopes can be covered with coyote bush, *Baccharis pilularis*, a plant that grows quickly with or without water and is considered to be indestructible. This genus secretes substances that suppresses weeds growing around it (Schmidt 1980; Jarvis et al. 1985). Native grasses and forbs have been established on many California roadways, reducing herbicide applications (Quarles 2003c).

California perennials that can be used to combat weeds include one of the earliest spring flowers, grand hound's tongue, *Cynoglossum grande*. One of the 76 species of wild California buckwheat, *Eriogonum* spp. can be combined with other hardy perennials such as yellow yarrow, *Eriophyllum confertiflorum*; coyote mint, *Monardella villosa*; and fragrant sage, *Salvia clevelandii* (Schmidt 1980).

## Reduce Insecticide Use

About 14 million lbs (6.4 million kg) of insecticide active ingredients are used in the home and garden market (EPA 2011). Some of these are for insects on lawns (Quarles 2006a). Again lawn replacement will solve the problem (Quarles 2009c). Your garden should have plenty of plant diversity. Variety discourages accumulation of specialist insects that rely on one or few plant species. Variety encourages insect generalists that are easier to control (Quarles and Grossman 2002). Using natives and companion plantings can also reduce insect problems (Riotte 1998).



California poppy, *Eschscholzia californica*

Photo by Br. Alfred Brousseau



Tidy tips, *Layia platyglossa*

Photo by Gary Monroe

If you can establish a few resident frogs in your garden, they can help with insect biocontrol. Most of their diet is composed of insects (Smyth 1962).

Beneficial insects can be encouraged by providing insectary plants that provide pollen and nectar. Insectary plants used to conserve beneficial insects include native annual wildflowers such as California poppy, *Eschscholzia californica*; buckwheat, *Eriogonum*; tansy leaf, *Phacelia tanacetifolia*; umbelliferous herbs such as coriander, chervil, and fennel, garden flowers such as sweet alyssum, *Lobularia maritima*; yarrow, *Achillea millefolium*; baby blue eyes, *Nemophila* and tidy tips, *Layia platyglossa* (Quarles and Grossman 2002). Sweet alyssum and phacelia have so much pollen, they are planted in organic lettuce fields to attract syrphid flies for aphid control (Chaney 2007).

Perennials such as California lilac, *Ceanothus* spp.; yarrow, *Achillea millefolium*; coyote bush, *Baccharis pilularis*; and perennial grasses are also good food sources. These plantings have something in bloom all year, so beneficials have a constant food supply (Long et al. 1998).

If cultural methods and biocontrols should fail, biopesticides can be used as a last resort. Common insect problems on ornamentals and in vegetable gardens such as aphids, whiteflies, thrips, and caterpillars can be treated with insecticidal soap, neem and other biopesticides, such as *Chromobacterium* (Grandevo®), *Bacillus thuringiensis* (BT), *Beauveria bassiana*, and *Metarhizium anisopliae* (Quarles 2013). (see Resources)

Perimeter sprays for ant control are a major source of water contamination in urban areas. Sprays of insecticides are applied on foundations and on adjacent soil completely around a structure. We can protect amphibians by switching from pesticide sprays to IPM methods, including sanitation, exclusion, habitat management, and ant baits. Vegetation should be pruned back away from structures, and watering should be minimized. Use of sticky barriers on trees can keep ants away from honeydew food sources produced by pest insects. Ant baits have low toxicity, and unlike pesticide sprays, will not kill beneficial insects or contaminate water (Quarles 2007b; Quarles 2012b).



## Resources

### Alternative Fungicides

- Bacillus subtilis* (Serenade®)—**Bayer Crop Science**, PO Box 4913; 8400 Hawthorn Rd., Kansas City, MO 64120; 816/242-2000, Fax 816/242-2659; www.cropscience.bayer.com
- Bicarbonate—**BioWorks Inc.**, see below
- Horticultural Oil—**Brandt Consolidated**, 2935 South Koke Mill Rd., Springfield, IL 62711; 800/442-9821, 217/547-5800, Fax 217/547-5841; www.brandt.co
- Reynoutria* (Regalia®)—**Marrone Bio Innovations**, 2121 Second St., Suite B-107, Davis, CA 95618; 877/664-4476, 530/750-2800; www.marronebioinnovations.com
- Trichoderma harzianum* (Plant Shield®)—**BioWorks Inc.**, 100 Rawson Road, Suite 205, Victor, NY 14564; 800/877-9443, 585/924-4362, Fax 800/903-2377; www.bioworksinc.com
- Soap (Concern®)—**Woodstream**, 69 N. Locust St., Lititz, PA 17543-0327; 800/800-1819, 717/626-2125, Fax 717/626-1912; www.woodstreampro.com

### Alternative Herbicides

- Acetic acid (20% vinegar)(Weed Pharm®)—**Pharm Solutions**, 2023 East Sim's Way #358, Pt. Townsend, WA 98368, 805/927-7500, Fax 805/927-7501; www.pharmsolutions.com
- Clove oil (Burn Out®)—**St. Gabriel Organics**, 14044 Litchfield Rd., Orange, VA 22960; 800/801-0061, 540/672-0866, Fax 540/672-0052; www.stgl.us
- Clove oil (Matran® II)—**EcoSmart Technologies**, 20 Mansell Court E, Ste 375, Roswell, GA 30076; 877/723-3545, Fax 615/261-7301; www.ecosmart.com
- Clove oil and cinnamon oil (Weed Zap®)—**JH Biotech Inc.**, 4951 Olivias Park Drive, Ventura, CA 93003; 800/428-3493; 805/650-8933; Fax 805/650-8942; www.jhbiotech.com
- Corn gluten meal—**Gardens Alive**, 5100 Schenley Place, Lawrenceburg, IN 47026; 513/354-1482, Fax 812/537-8660; www.gardensalive.com
- d-limonene (GreenMatch®)—see Brandt Consolidated above
- Iron Chelate (Iron-X)—Gardens Alive, see above
- Phoma macrostoma* (Phoma)—**Scotts Company**, 14111 Scottslawn Rd., Marysville, OH 43041; 800/221-1760, 937/642-6402, Fax 937/644-5533; www.scotts.com

### Alternative Insecticides

- Ant Bait (Terro®)—**Woodstream**, see below
- Ant Bait (Maxforce®)—**Bayer ES (Environmental Science)**, 2 TW Alexander Drive, Research Triangle Park, NC 27709; 800/331-2867; www.backedbybayer.com
- Ant Bait (Advion®)—**Dupont Professional Products**, CRP Bldg. 705, Contra Rd., Wilmington, DE 19805; 888/638-7668, www.proproducts.dupont.com
- Bacillus thuringiensis* (BT)—Gardens Alive, see above
- Beauveria* (Botanigard®)—**BioWorks Inc.**, 100 Rawson Road, Suite 205, Victor, NY 14564; 800/877-9443, 585/924-4362, Fax 800/903-2377; www.bioworksinc.com
- BTI (Mosquito Dunks®)—**Summit Chemical Co.**, 235 S. Kresson St., Baltimore, MD 21224-2616; 800/227-8664, 410/522-0661, Fax 410/522-0833; www.summitchemical.com
- Chromobacterium* (Grandevo®)—Marrone, see above
- Metarhizium* (MET-52®)—**Novozymes Biologicals**, 77 Perry Chapel Church Rd., Franklinton, NC 27525; 919/494-3000, Fax 919/494-3450; www.novozymes.com
- Neem-(BioNeem®)—**Woodstream**, see below
- Soap (Safer®)—**Woodstream**, 69 N. Locust St., Lititz, PA 17543-0327; 800/800-1819, 717/626-2125, Fax 717/626-1912; www.woodstreampro.com

### Organizations

- Amphibian and Reptile Conservancy (ARC), www.amphibianandreptile-conservancy.org
- Audubon Society, www.audubon.org
- Bay Friendly Gardening, www.bayfriendlycoalition.org
- California Native Plant Society, www.cnps.org
- Humane Society Backyard Sanctuary Program, www.humanesociety.org
- National Wildlife Federation, www.nwf.org
- National Reptile and Amphibian Advisory Council (NRAAC), www.nraac.org
- National Resources Defense Council, www.nrdc.org
- Nature Conservancy, www.nature.org
- Save the Frogs, www.savethefrogs.com
- Sierra Club, www.sierraclub.org
- Society for Conservation Biology, www.conbio.org
- Partners in Amphibian and Reptile Conservation (PARC), www.parc-place.org

## Reduce Fungicide Use

About 7 million lbs (3.2 million kg) of fungicide active ingredients are used in the home and garden market. Another 19 million lbs (8.6 million kg) are used on commercial landscapes (EPA 2011). Some of the fungicides are used on turfgrass, others are used for ornamental plants. Again, fungicide applications can be reduced by replacing your lawn.

Diseases can be controlled on ornamental plants by having the right plant in the right place, by choosing resistant species, and by following proper cultural methods. The proper amount of water should be used. Trees should be watered at the dripline, not at the trunk. The site should have good drainage, and watering should be done in the morning. Drip irrigation causes fewer problems with diseases. Composts and compost teas will help prevent diseases. Quick release fertilizers that encourage soil pathogens and pollute water should be avoided (Quarles 2001bc; 2005; 2013).

Spraying foliage with dilute solutions of potassium hydrogen phosphate and other materials will cause plants to produce molecular defenses against disease. This is called induced systemic resistance (Quarles 2002).

Diseases can be prevented by induced resistance, and by alternative fungicides such as biorationals and microbials. Sprays of 1% bicarbonate (1 Tbsp/gallon water), or 1% oil (3 Tbsp/gallon water) can protect against powdery mildew. *Bacillus subtilis* (Serenade®) or extract of giant knotweed, *Reynoutria sachalinensis* (Regalia®) can protect against many diseases without killing amphibians. Biorationals such as neem oil



Applications of compost tea can help reduce disease.

Photo Harvard Facilities Maintenance

sprays are also useful (Quarles 2005; Quarles 2002; 2004a; 2009b). (see Resources)

## Professional Landscape Maintenance

Techniques that work for the backyard gardener will also work for professionals working on commercial landscapes. Implementation of these techniques in a landscape IPM program can reduce pesticide use by more than 85%(Quarles 2004c).

Most of the pesticides used on landscapes are either herbicides or fungicides (EPA 2011). For those of us who work on landscape design and maintenance, we can help amphibians by choosing plants resistant to disease, and making sure plants in the same area have similar watering and fertilization needs. If possible, turfgrass should be replaced. Possibilities are mowed pathways in native meadowgrasses and wildflowers; mowed, gravel, or flagstone pathways integrated with planting beds of ornamentals, spices, or vegetables (Quarles 2004b; Quarles 2009c).

If removal of turfgrass is not an option, organic methods, proper choice of turfgrass species, and least-toxic herbicides can help protect amphibians (Quarles 2009a; Quarles 2011). Hardy allelopathic turfgrass such as mixtures of tall fescue, *Festuca arundinacea*; and perennial ryegrass, *Lolium perenne*, will help suppress weeds. Do not use potassium rich fertilizers that encourage dandelions. Infrequent, deep watering is best for weed control (Quarles 2005).

Herbicides in planting beds can be avoided by mulching and establishing low growing groundcover (Quarles 2003b; Quarles 2004b; Quarles 2008). Landscape fabrics of permeable plastic can add to weed protection. Organic mulches of bark, sawdust, straw, or rice hulls four inches (10.2 cm) deep are effective for many weeds. Combinations of landscape fabrics and organic mulches provide the best protection. Mulches should also be used around trees to prevent weeds (Quarles 2004b).

Fungicides can be avoided by using resistant species, proper sunlight and watering, and alternative fungicides such as essential oils, giant knotweed extract, microbials such as Serenade® and Plant Shield®. (Quarles 2006b; Quarles 2009b; Quarles 2013).

Use of composts and slow release natural fertilizers will keep waterways free of fertilizer pollution. Composts can be produced onsite from prunings and trimmings. Grass clippings are good fertilizer (Quarles 2004c).

## Conclusion

We can protect amphibians by providing them with habitat and by reducing pesticide use. Backyard gardens with resources for amphibians, birds, butterflies, bees and beneficial insects are aesthetically pleasing and can help prevent the relentless slide of amphibians toward extinction.

## Acknowledgement

The author wishes to thank Erin Berg for helping with the research on this article.

---

*William Quarles, Ph.D., is an IPM Specialist, Executive Director of the Bio-Integral Resource Center (BIRC), and Managing Editor of the IPM Practitioner. He can be reached by email, birc@igc.org.*

## References

- Collins, J.P. and M.L. Crump. 2009. *Extinction in Our Times: Global Amphibian Decline*. Oxford University Press. New York. 273 pp.
- Chaney, W. Organic lettuce biocontrol. *IPM Practitioner* 29(5/6):9-10.
- Daar, S. 1995. Get the weeds out. *Plants & Gardens* 10(1):1, 13,14.
- Elmore, C.L. 1993. Alternate methods for weed management in an urban environment. *Proceedings of the 45th Annual California Weed Conference*, pp. 26-30.
- EPA (Environmental Protection Agency). 2011. *Pesticide Industry Sales and Usage: 2006 and 2007 Market Estimates*. EPA, Washington. 33 pp.
- Flint, M.L. and P.A. Roberts. 1988. Using crop diversity to manage pest problems: some California examples. *Am. J. Alternative Agric.* 3(4):163-167.
- Fowler, V.L. 2013. *Backyard Water Gardens*. Cool Springs Press.176 pp.
- Gray, M.E. 2011. Relevance of traditional integrated pest management (IPM) strategies for commercial corn production in a transgenic

- agroecosystem—a bygone era? *J. Agric. Food Chem.* 59:5852-5858.
- Hayes, T.B., K. Haston, M. Tsui et al. 2003. Atrazine induced hermaphroditism at 0.1 ppb in American leopard frogs, *R. pipiens*: laboratory and field evidence. *Environ. Health Perspectives* 111(4):568-575.
- Jarvis, B.B., N.B. Pena, M.M. Rao et al. 1985. Allelopathic agents from *Parthenium hysterophorus* and *Baccharis megapotamica*. In: Thompson, pp. 149-159.
- Liebman, M., L.R. Gibson, D.N. Sundberg et al. 2008. Agronomic and economic performance characteristics of conventional and low external input cropping systems in the central Corn Belt. *Agronomy J.* 100:600-610.
- Long, R.F., A. Corbett, C. Lamb, C.R.-Horton, J. Chandler and M. Stimmann. 1998. Beneficial insects move from flowering plants to nearby crops. *Calif. Agric.* 52(5):23-26.
- McMahon, T.A., N.T. Halstead, S. Johnson et al. 2011. The fungicide chlorthaloni is nonlinearly associated with cortisone levels, immunity, and mortality in amphibians. *Environ. Health Perspectives* 119(8):1098-1103.
- Morandin, L., R.F. Long, C. Pease and C. Kremen. 2011. Hedgerows enhance beneficial insects on farms in California's Central Valley. *Calif. Agric.* 65(4):197-201.
- NOAA (National Oceanic and Atmospheric Association). 2001. *Wetland Creation, Restoration, and Enhancement*. U.S. Department of Commerce, NOAA, EPA, FWS, NRCS. Washington, DC. 92 pp.
- Olkowski, W., S. Daar and H. Olkowski. 2013. *Gardener's Guide to Common Sense Pest Control*. 2nd ed. S. Ash, ed. Taunton Press, Newtown, CT.
- Quarles, W. 2001a. Sprays for adult mosquitoes—a failed technology? *Common Sense Pest Control Quarterly* 17(2):3-7.
- Quarles, W. 2001b. Composts for a healthy organic garden. *Common Sense Pest Control Quarterly* 17(3):3-11.
- Quarles, W. 2001c. Compost tea for organic farming and gardening. *IPM Practitioner* 23(9/10):1-9.
- Quarles, W. and J. Grossman. 2002. Insectary plants, intercropping, and biological control. *IPM Practitioner* 24(3/4):1-11.
- Quarles, W. 2002. Aspirin, composts, talking plants, and induced systemic resistance. *IPM Practitioner* 24(5/6):1-9.
- Quarles, W. 2003a. Herbicide free lawns. *Common Sense Pest Control Quarterly* 19(1):3-7.
- Quarles, W. 2003b. Integrated weed control for the home and garden. *Common Sense Pest Control Quarterly* 19(1):8-18.
- Quarles, W. 2003c. Native plants and integrated roadside vegetation management. *IPM Practitioner* 25(3/4):1-9.
- Quarles, W. 2004a. Non-toxic fungicides for roses. *Common Sense Pest Control Quarterly* 14(2):7-14.
- Quarles, W. 2004b. Thermal weed management: hot alternatives for urban areas and organic farms. *IPM Practitioner* 26(5/6):1-9.
- Quarles, W. 2004c. Sustainable urban landscapes and integrated pest management. *IPM Practitioner* 26(7/8):1-11.
- Quarles, W. 2005. Landscape IPM strategies for diseases of ornamentals. *IPM Practitioner* 27(3/4):1-8.
- Quarles, W. 2006a. IPM for turfgrass insect pests. *Common Sense Pest Control Quarterly* 22(1):3-11.

Quarles, W. 2006b. IPM for turfgrass diseases. *Common Sense Pest Control Quarterly* 22(1):12-15.

Quarles, W. 2007a. Global warming means more pests. *IPM Practitioner* 29(9/10):1-8.

Quarles, W. 2007b. IPM for the Argentine ant. *Common Sense Pest Control Quarterly* 23(2/3):8-20.

Quarles, W. 2008. Mulch optimization in integrated pest management. *IPM Practitioner* 30(7/8):1-10.

Quarles, W. 2009a. Organic and IPM management of turfgrass. *IPM Practitioner* 31(7/8):1-8.

Quarles, W. 2009b. Giant knotweed, plant disease protection and immortality. *IPM Practitioner* 31(3/4):1-6.

Quarles, W. 2009c. Rethinking the American lawn. *Common Sense Pest Control Quarterly* 25(1):3-10.

Quarles, W. 2010. Alternative herbicides in turfgrass and organic agriculture. *IPM Practitioner* 32(5/6):1-8.

Quarles, W. 2011. Pesticides and honey bee death and decline. *IPM Practitioner* 33(1/2):1-8.

Quarles, W. 2012a. Brave new world—systemic pesticides and genetically engineered crops. *IPM Practitioner* 33(3/4):1-9.

Quarles, W. 2012b. Pyrethroid perimeter sprays in structural pest control. *IPM Practitioner* 33(5/6):1-6.

Quarles, W. 2013. New biopesticides for IPM and organic production. *IPM Practitioner* 33(7/8):1-9.

Quarles, W. 2014. Protecting bees, birds, and beneficials from neonicotinoids. *Common Sense Pest Control Quarterly* 28(1-4):11-19.

Riotte, L. 1998. *Carrots Love Tomatoes: Secrets of Companion Planting for a Healthy Garden*. Storey Publishers, North Adams, MA. 219 pp.

Rohr, J.R. and K.A. McCoy. 2010. A qualitative meta-analysis reveals consistent effects of atrazine on freshwater fish and amphibians. *Environ. Health Perspectives* 118(1):20-32.

Schmidt, M.G. 1980. *Growing California Native Plants*. UC Press, Berkeley and Los Angeles. 366 pp.

Smyth, H.R. 1962. *Amphibians and their Ways*. Macmillan, New York. 292 pp.

Sparling, D.W. and G.M. Fellers. 2009. Toxicity of two insecticides to California USA anurans and its relevance to declining amphibian populations. *Environ. Tox. Chem.* 28(8):1696-1703.

Steinberg, T. 2006. *American Green: The Obsessive Quest for the Perfect Lawn*. W.W. Norton, New York. 295 pp.

Stuart, S.N., J.S. Chanson, N.A. Cox et al. 2004. Status and trends of amphibian declines and extinctions worldwide. *Science* 306:1783-1786.

Thompson, A.C., ed. 1985. *The Chemistry of Allelopathy: Biochemical Interactions Among Plants*. ACS Symposium No. 268, American Chemical Society, Washington, DC. 470 pp.

Wagner, N., W. Reichenbecher, H. Teichmann et al. 2013. Questions concerning the potential impact of glyphosate based herbicides on amphibians. *Environ. Toxicol. Chem.* 32(8):1688-1700.

Zhu, W., D.R. Schmehl, CA. Mullin et al. 2014. Four common pesticides, their mixtures, and a formulation solvent in the hive environment have a high oral toxicity to honey bee larvae. *PLoS One*: January 8, 2014. 12pp.

## The Ultimate in Biological Pest Control Guardian Nematodes™ Lawn Patrol™

(*Steinernema* spp. & *Heterorhabditis* spp. beneficial nematodes)

**Application rate:** 1 million per 2,000/3,000 sq.ft. of greenhouse  
24 million per acre

**Pests: Controls over 250 root zone pests including:**

- |                      |                          |                         |
|----------------------|--------------------------|-------------------------|
| * Cutworms           | * Fungus gnats           | * Corn rootworm         |
| * Black vine weevils | * White grubs            | * Thrips                |
| * Sod webworms       | * Strawberry root weevil | * Japanese beetle grubs |

**Other beneficial items:** Encarsia formosa, Phytoseiulus persimilis, Mesoseiulus longipes, Neoseiulus californicus, Aphidoletes aphidimyza, Aphidius, Amblyseius cucumeris, Chrysopa carnea (lacewings), Hippodamia convergens (ladybugs), Nosema locustae (Nolo Bait), Orius, Mealybug predators, etc. Sticky ribbons, Sticky cards, Insect Screens and much more!



**Call TOLL-FREE 1-800-634-6362  
for a FREE Catalog**

**HYDRO-GARDENS, INC.**  
**Your Total Greenhouse Supplier!**  
<http://www.hydro-gardens.com>  
email: [hgi@hydro-gardens.com](mailto:hgi@hydro-gardens.com)

**8765 Vollmer Road, Colorado Springs, CO 80908 \* FAX 719-495-2266**

### Dear BIRC Members

Decreased income has forced us to reduce the number of Quarterly issues that we produce each year. This *Special Issue* will be the only Quarterly produced in 2015. Quarterly Members will also receive three issues of our other publication—the *IPM Practitioner*.

We appreciate your support, and hope you will continue as BIRC members.

*Thank you,  
William Quarles, Ph.D.  
Executive Director*

### Acknowledgement

*BIRC wishes to thank the JiJi Foundation for a generous grant that helped with production of this publication.*

### "Pest Controls Mother Nature Would Use" NATURE'S CONTROL

*Specializing in Beneficial Insects and Organic Pest Controls for Over 20 Years!*

- Ladybugs, Spider Mite Predators, Nematodes, Lacewings, and many more "Hired Bugs".
- Mighty Myco Mycorrhizae.
- Magnifiers, Yellow & Blue Traps.
- Quantity Discounts.
- Orders Arrive in 1-2 Days.
- Live Delivery **Guaranteed!**
- Friendly, Knowledgeable Staff.
- Check our website for the distributor nearest you, or call for your free "Hired Bugs" brochure.

**NATURE'S CONTROL**  
PHONE: (541) 245-6033  
FAX: (800) 698-6250  
P.O. BOX 35  
MEDFORD, OR 97501  
[www.naturescontrol.com](http://www.naturescontrol.com)



**Bio-Integral Resource Center**  
**B • I • R • C**  
P.O. Box 7414 • Berkeley, CA 94707

ADDRESS SERVICE REQUESTED

NON PROFIT ORG.  
U.S. POSTAGE  
PAID  
Berkeley, CA  
Permit #442

Please renew your membership and help support BIRC. THANK YOU  INKWORKPRESS.ORG



# PESTEC



Specialists in Structural IPM

• Consulting

• Exclusion • Sanitation • Steam • Vacuuming • Baits

Call us at 925/757-2945; [www.ipmprovider.com](http://www.ipmprovider.com)

